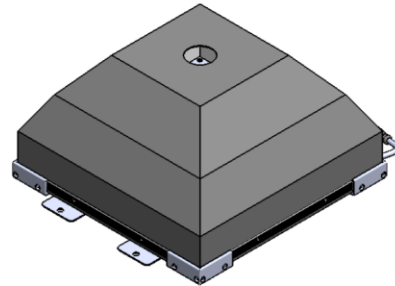
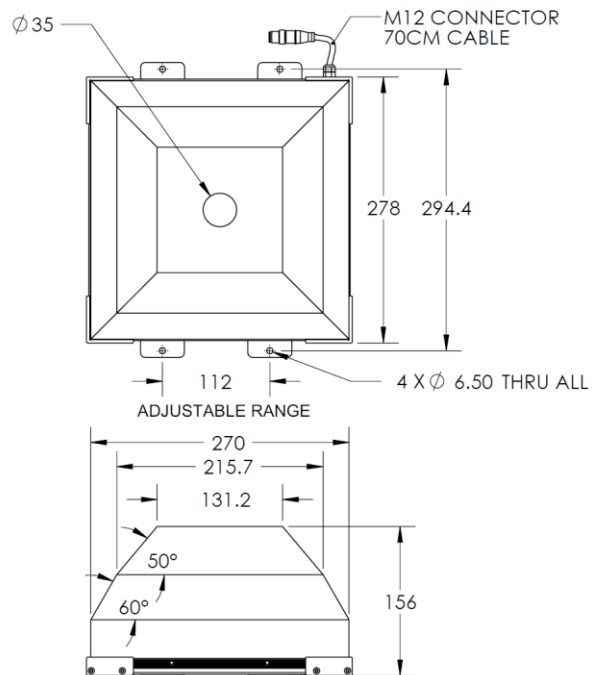


HIDQ-00-190-X-W-24V

Lighting Dimension



Mechanical Information	
Casing Material	Aluminium
Storage & Operating Temperature Range	Temp 0-60°C, Humidity 20-85%
Weight	2370 g
Outer Dimension	278 X 278 mm
Inner Diameter	35 mm
Thickness	156 mm



HIDQ-00-190-X-W-24V

Optical Information											
Part Number		HIDQ-00-190-X-W-24V									
LED Colour		WHITE									
Wavelength	(nm)	*Chromaticity Table									
Intensity (±15%)	(Lux)	12164				10557				9896	
Working Distance	(mm)	79				89				99	
Illumination (number of rows)		2									
Illumination Active Area											
Active Outer Dimension	(mm)	200 X 200									
Active Inner Diameter	(mm)	35									
Emission Angle	(deg.)	0									
Eye Safety Class (IEC62471)		EXEMPT									
*CHROMATICITY TABLE	X	0.296	0.287	0.307	0.311	X	0.311	0.307	0.33	0.33	
	Y	0.276	0.295	0.315	0.294	Y	0.294	0.315	0.339	0.318	
Electrical Information											
Lighting Supply Voltage (constant voltage mode)		24V ± 2%									
Continuous Current	(mA)	960									
Power Consumption	(W)	23.04									
Lighting Casing Temperature, Operating after 60 minutes	°C	48.3									
Strobe Mode Specification											
Pulse Operation		YES									
Max. Lighting Supply Voltage (constant voltage power supply)	(V)	Pulsing at 24VDC to 48VDC, 0-10% Duty Cycle Recommended at 36VDC									
Pulse Current, (Max. 10 msec) (constant current power supply)	(mA)	2880									
Max. Trigger Pulse Duration	(msec)	10									
Duty Cycle		0-10%									
Additional Information											
Additional Cooling Method		Attached to machine part for better heat dissipation									
Lifespan in Continuous Mode		20,000 hours (drop to 50% intensity) at 25°C									
Lifespan in Strobe Mode		Est. >50,000 hours (drop to 50% intensity) at 25°C									
Intensity Controller Selection		SD/SDA-Series									
CE Conformity		YES									
RoHS Compliance		YES									
Connection											
Connector Type (default)		M12 5 PIN CONNECTOR (MALE)									
Cable Length (out from lighting)	(mm)	700									
Pin Configuration		Pin	Signal				Cable Colour				
		1	24V				BROWN				
		2	-				WHITE				
		3	GND				BLUE				
		4	-				BLACK				
		5	-				GRAY				
Extension Cable											
Connector Type (default)		M12 5 PIN CONNECTOR (FEMALE)									
Part Number		EXT-FL-M12F-3M-24V									
Cable Length (out from female connector)	(mm)	3000									
Extension Cable (connect to M12 5 Pin Male Connector from lighting)											
Application											
Illumination Type		Indirect Square Illumination									
Application Use		Crack, chip, stains and mark on edge of square or rectangular object									

