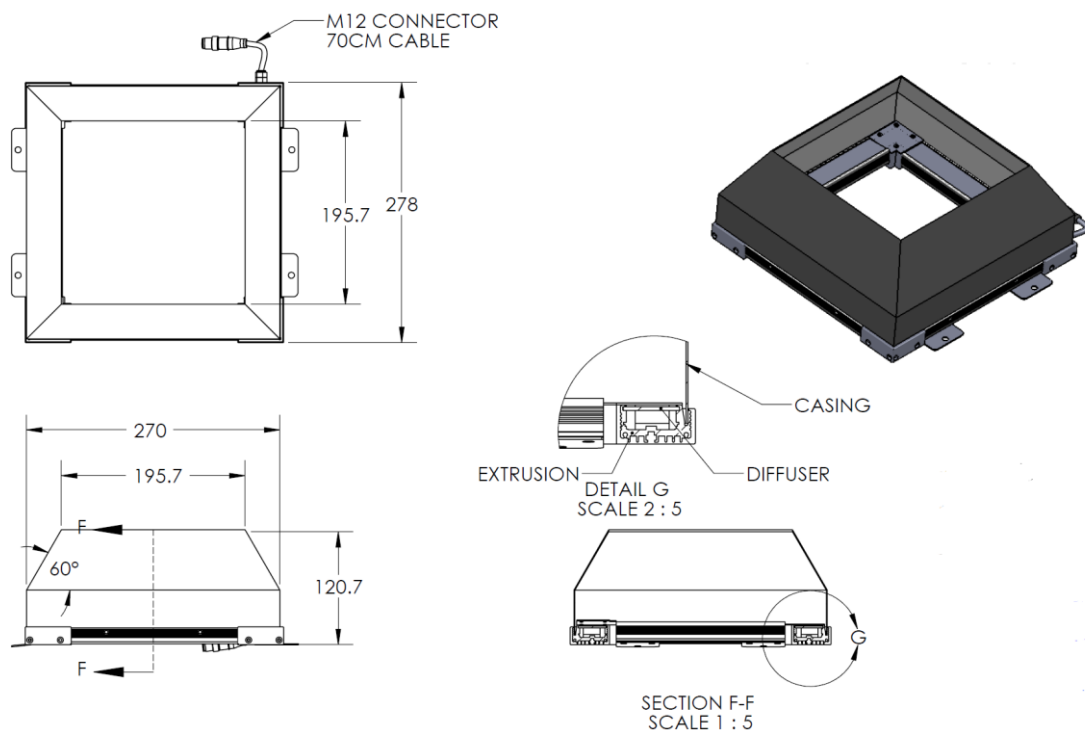


## HDLQ-00-190-X-W-24V

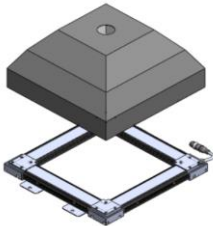
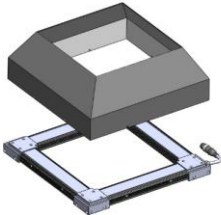
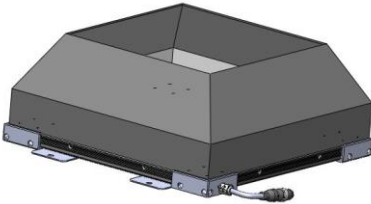
### Lighting Dimension



Mechanical Information	
Casing Material	Aluminium
Storage & Operating Temperature Range	Temp 0-60°C, Humidity 20-85%
Weight	2160 g
Outer Dimension	278 X 278 mm
Inner Dimension	195.7 X 195.7 mm
Thickness	120.7 mm



## HDLQ-00-190-X-W-24V

Advantages	
Flexible Illuminator	<div>Indirect Square Illumination</div>  <div>Square Dark Field Illumination</div> 
Easy Mounting	<div>Extend Plate</div> 

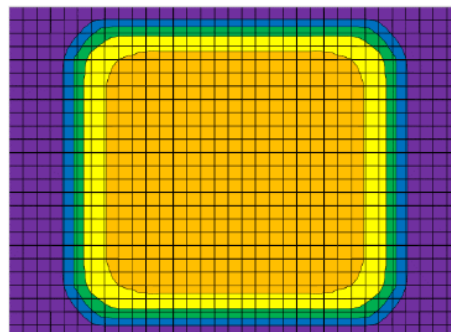
### Uniformity Graph (Relative Irradiation Strength) - Representative Pattern

LENS FOCAL LENGTH,  $F = 6 \text{ mm}$

CWD = 190 mm

LWD = 30 mm

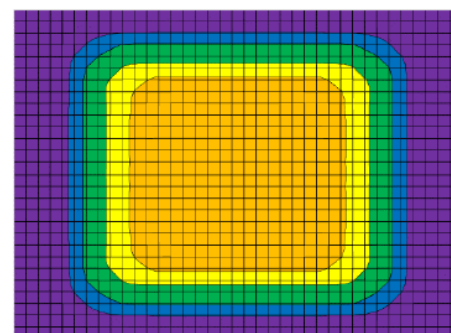
COLOUR	TOLERANCE	L X W
Orange	$\pm 10 \%$	99 X 96
Yellow	$\pm 15 \%$	115 X 108
Green	$\pm 20 \%$	122 X 115
Blue	$\pm 25 \%$	130 X 120
Purple	$\pm 30 \%$	170 X 130



CWD = 210 mm

LWD = 50 mm

COLOUR	TOLERANCE	L X W
Orange	$\pm 10 \%$	89 X 87
Yellow	$\pm 15 \%$	107 X 97
Green	$\pm 20 \%$	127 X 116
Blue	$\pm 25 \%$	139 X 125
Purple	$\pm 30 \%$	190 X 145



\* Each individual box is 5 X 5 mm.

\*Disclaimer : The graphs portrayed are for reference only and does not in any way guarantee the quality of this product.