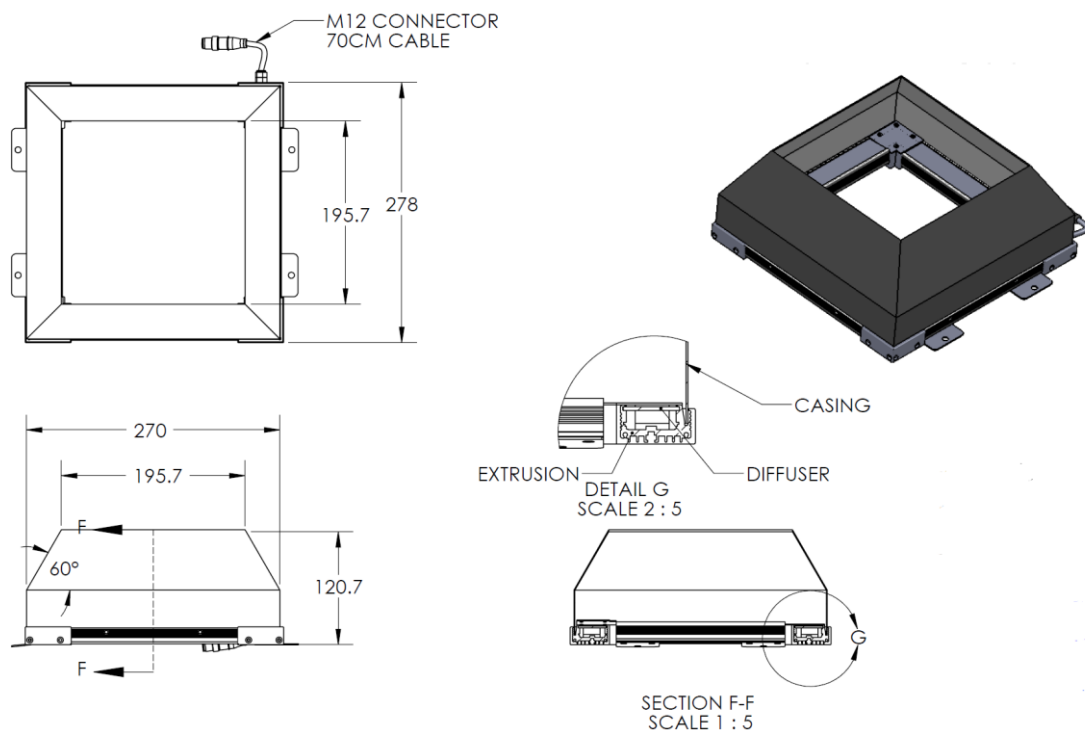


HDLQ-00-190-X-B-24V

Lighting Dimension



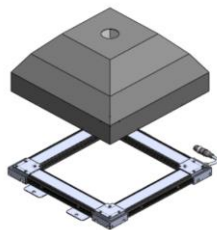
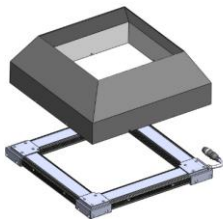
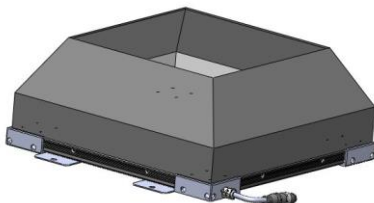
Mechanical Information	
Casing Material	Aluminium
Storage & Operating Temperature Range	Temp 0-60°C, Humidity 20-85%
Weight	2160 g
Outer Dimension	278 X 278 mm
Inner Dimension	195.7 X 195.7 mm
Thickness	120.7 mm



HDLQ-00-190-X-B-24V

Optical Information				
Part Number		HDLQ-00-190-X-B-24V		
LED Colour		BLUE		
Wavelength	(nm)	470		
Intensity (±15%)	(Lux)	2364	1534	1969
Working Distance	(mm)	78	88	98
Illumination (number of rows)		2		
Illumination Active Area				
Active Outer Dimension	(mm)	200 X 200		
Active Inner Dimension	(mm)	195.7 X 195.7		
Emission Angle	(deg.)	0		
Eye Safety Class (IEC62471)		II		
Electrical Information				
Lighting Supply Voltage (constant voltage mode)		24V ± 2%		
Continuous Current	(mA)	960		
Power Consumption	(W)	23.04		
Lighting Casing Temperature, Operating after 60 minutes	°C	48.3		
Strobe Mode Specification				
Pulse Operation		YES		
Max. Lighting Supply Voltage (constant voltage power supply)	(V)	Pulsing at 24VDC to 48VDC, 0-10% Duty Cycle Recommended at 36VDC		
Pulse Current, (Max. 10msec) (constant current power supply)	(mA)	2880		
Max. Trigger Pulse Duration	(msec)	10		
Duty Cycle		0-10%		
Additional Information				
Additional Cooling Method		Attached to machine part for better heat dissipation		
Lifespan in Continuous Mode		20,000 hours (drop to 50% intensity) at 25°C		
Lifespan in Strobe Mode		Est. >50,000 hours (drop to 50% intensity) at 25°C		
Intensity Controller Selection		SD/SDA-Series		
CE Conformity		YES		
RoHS Compliance		YES		
Connection				
Connector Type (default)		M12 5 PIN CONNECTOR (MALE)		
Cable Length (out from lighting)	(mm)	700		
Pin Configuration		Pin	Signal	Cable Colour
		1	24V	BROWN
		2	-	WHITE
		3	GND	BLUE
		4	-	BLACK
		5	-	GRAY
Extension Cable				
Connector Type (default)		M12 5 PIN CONNECTOR (FEMALE)		
Part Number		EXT-FL-M12F-3M-24V		
Cable Length (out from female connector)	(mm)	3000		
Extension Cable (connect to M12 5 Pin Male Connector from lighting)				
Application				
Illumination Type		Square Dark Field Illumination		
Application Use		Inspecting flat, reflective surfaces		

HDLQ-00-190-X-B-24V

Advantages	
Flexible Illuminator	<div>Indirect Square Illumination</div>  <div>Square Dark Field Illumination</div> 
Easy Mounting	<div>Extend Plate</div> 

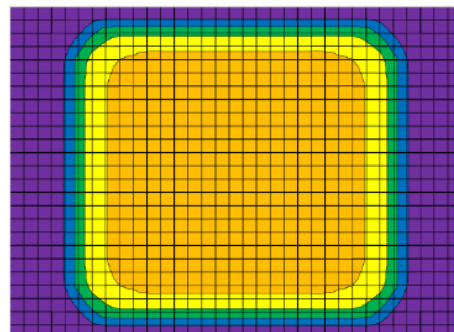
Uniformity Graph (Relative Irradiation Strength) - Representative Pattern

LENS FOCAL LENGTH, $F = 6 \text{ mm}$

CWD = 190 mm

LWD = 30 mm

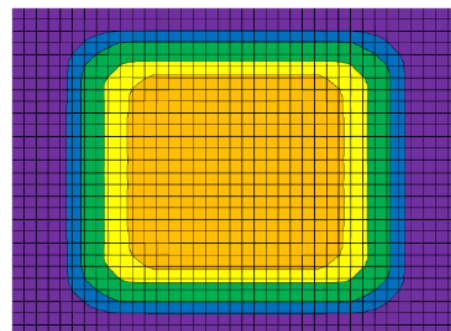
COLOUR	TOLERANCE	L X W
Orange	$\pm 10 \%$	99 X 96
Yellow	$\pm 15 \%$	115 X 108
Green	$\pm 20 \%$	122 X 115
Blue	$\pm 25 \%$	130 X 120
Purple	$\pm 30 \%$	170 X 130



CWD = 210 mm

LWD = 50 mm

COLOUR	TOLERANCE	L X W
Orange	$\pm 10 \%$	89 X 87
Yellow	$\pm 15 \%$	107 X 97
Green	$\pm 20 \%$	127 X 116
Blue	$\pm 25 \%$	139 X 125
Purple	$\pm 30 \%$	190 X 145



* Each individual box is 5 X 5 mm.

*Disclaimer : The graphs portrayed are for reference only and does not in any way guarantee the quality of this product.