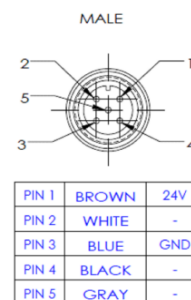
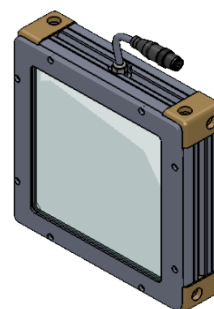
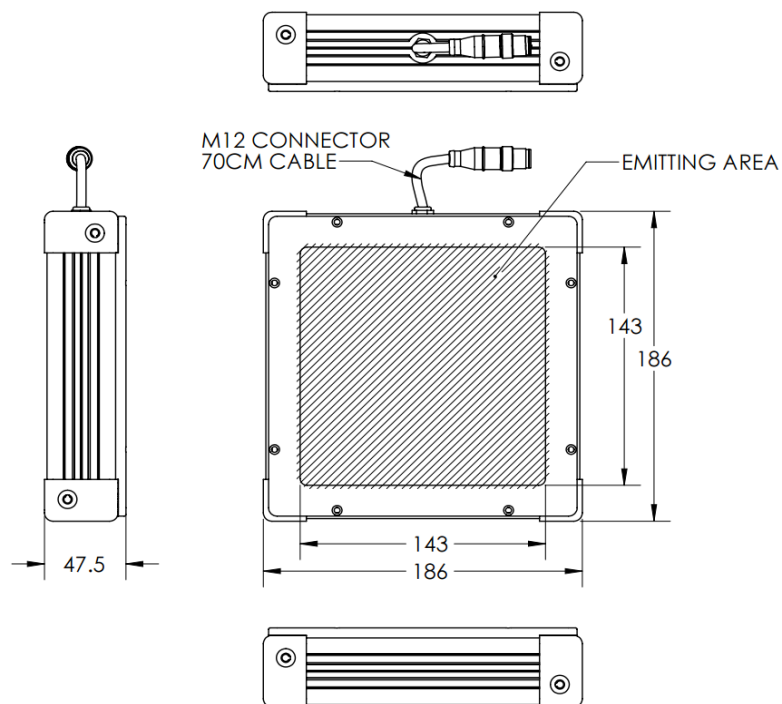


HBBC-00-160X160-X-B-24V

Lighting Dimension



| Mechanical Information | |
|---------------------------------------|------------------------------|
| Casing Material | Aluminium |
| Storage & Operating Temperature Range | Temp 0-60°C, Humidity 20-85% |
| Weight | 1380 g |
| Length / Outer Diameter | 186 mm |
| Width / Inner Diameter | 186 mm |
| Thickness / Height | 47.5 mm |



HBBC-00-160X160-X-B-24V

| Optical Information | | | | |
|--|--------|--|--------|--------------|
| Part Number | | HBBC-00-160X160-X-B-24V | | |
| LED Colour | | BLUE | | |
| Wavelength | (nm) | 470 | | |
| Intensity (±15%) | (Lux) | 26160 | 23520 | 21360 |
| Working Distance | (mm) | 10 | 20 | 30 |
| Illumination (number of rows) | | X | | |
| Illumination Active Area | | | | |
| Active Length | (mm) | 143 | | |
| Active Width | (mm) | 143 | | |
| Emission Angle | (deg.) | 0 | | |
| Eye Safety Class (IEC62471) | | II | | |
| | | | | |
| Electrical Information | | | | |
| Lighting Supply Voltage (constant voltage mode) | | 24V ± 2% | | |
| Continuous Current | (mA) | 500 | | |
| Power Consumption | (W) | 12 | | |
| Lighting Casing Temperature, Operating after 60 minutes | °C | 50.9 | | |
| | | | | |
| Strobe Mode Specification | | | | |
| Pulse Operation | | YES | | |
| Max. Lighting Supply Voltage (constant voltage power supply) | (V) | Pulsing at 24VDC to 48VDC, 0-10% Duty Cycle Recommended at 36VDC | | |
| Pulse Current, (Max. 10 msec) (constant current power supply) | (mA) | 1500 | | |
| Max. Trigger Pulse Duration | (msec) | 10 | | |
| Duty Cycle | | 0-10% | | |
| | | | | |
| Additional Information | | | | |
| Additional Cooling Method | | Attached to machine part for better heat dissipation | | |
| Intensity Controller Selection | | SD/SDA-Series | | |
| CE Conformity | | YES | | |
| RoHS Compliance | | YES | | |
| | | | | |
| Connection | | | | |
| Connector Type (default) | | M12 5 PIN CONNECTOR (MALE) | | |
| Cable Length (out from lighting) | (mm) | 700 | | |
| Pin Configuration | | Pin | Signal | Cable Colour |
| | | 1 | 24V | BROWN |
| | | 2 | - | WHITE |
| | | 3 | GND | BLUE |
| | | 4 | - | BLACK |
| | | 5 | - | GRAY |
| | | | | |
| | | | | |
| Extension Cable | | | | |
| Connector Type (default) | | M12 5 PIN CONNECTOR (FEMALE) | | |
| Part Number | | EXT-FL-M12F-3M-24V | | |
| Cable Length (out from female connector) | (mm) | 3000 | | |
| Extension Cable (connect to M12 5 Pin Male Connector from lighting) | | | | |
| | | | | |
| Application | | | | |
| Illumination Type | | Backlight Illumination | | |
| Application Use | | Lead frame inspection, shape recognition, size measurement | | |

HBBC-00-160X160-X-B-24V

Uniform Graph (Relative Irradiation Strength) - Representative pattern

Lens focal length, $f = \infty$
 CWD = 430mm
 LWD = 430mm
 Lighting angle: 0°

| Tolerance % | L X W |
|-------------|-----------|
| 10% | 81 X 94 |
| 20% | 117 X 127 |
| 30% | 134 X 140 |
| 40% | 142 X 144 |

