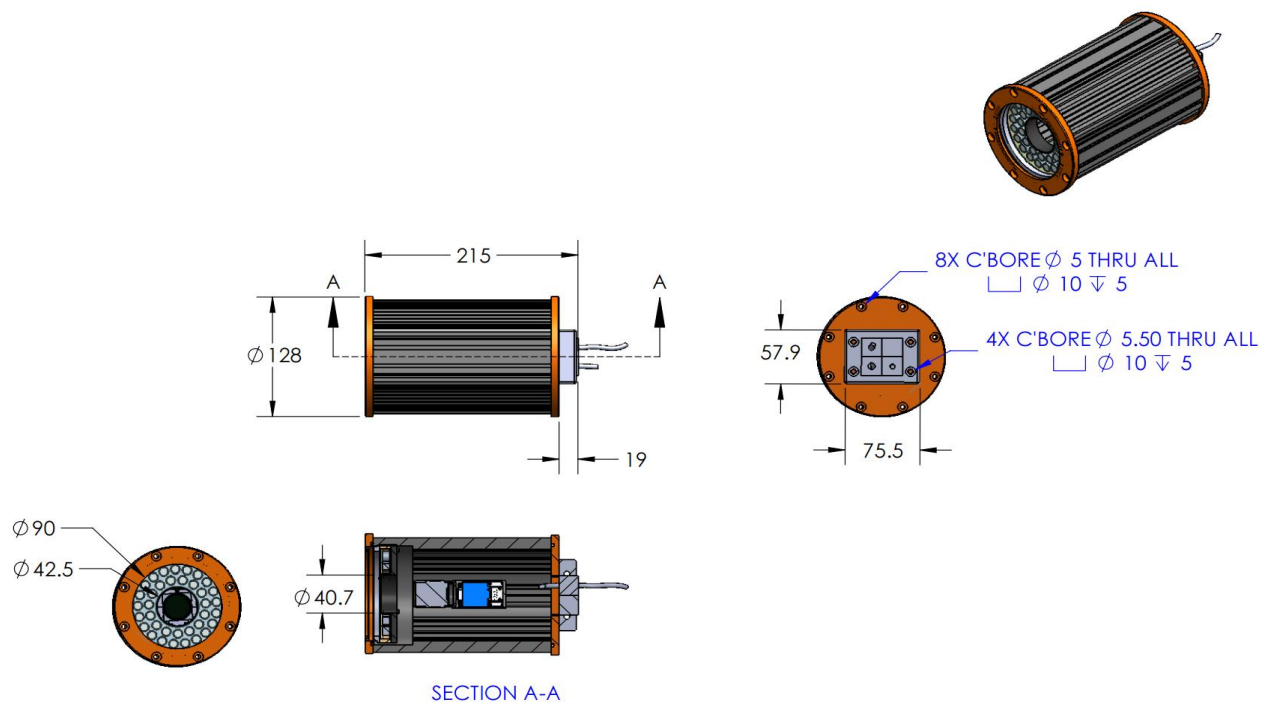


IPE-130X180-HLW-00-2-G-XXX-XXXX-X

Lighting Dimension



| Mechanical Information | |
|---------------------------------------|----------------------------|
| Casing Material | Aluminium |
| Storage & Operating Temperature Range | Temp 0-°C, Humidity 20-85% |
| Weight | 2636 g |
| Length / Outer Diameter | 128 mm |
| Width / Inner Diameter | 40.7 mm |
| Thickness / Height | 215 mm |



IPE-130X180-HLW-00-2-G-XXX-XXXX-X

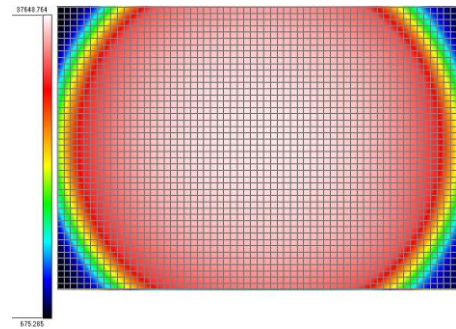
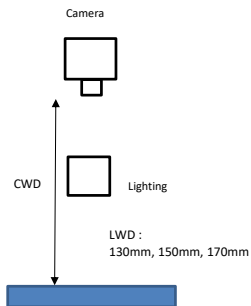
| Optical Information | | | | |
|--|--------|---|--------|--------------|
| Part Number | | IPE-130X180-HLW-00-2-G-XXX-XXXX-X | | |
| LED Colour | | GREEN | | |
| Wavelength | (nm) | 525 | | |
| Intensity (±15%) | (Lux) | 43000 | 42600 | 40400 |
| Working Distance | (mm) | 112 | 127 | 143 |
| Illumination (number of rows) | | 2 | | |
| Illumination Active Area | | | | |
| Active Length | (mm) | 90 | | |
| Active Width | (mm) | 42.3 | | |
| Emission Angle | (deg.) | 0 | | |
| Eye Safety Class (IEC62471) | | EXEMPT | | |
| | | | | |
| Electrical Information | | | | |
| Lighting Supply Voltage (constant voltage mode) | | 24V ± 2% | | |
| Continuous Current | (mA) | 480 | | |
| Power Consumption | (W) | 11.52 | | |
| Lighting Casing Temperature, Operating after 60 minutes | °C | 66.7 | | |
| | | | | |
| Strobe Mode Specification | | | | |
| Pulse Operation | | YES | | |
| Max. Lighting Supply Voltage (constant voltage power supply) | (V) | Pulsing at 24VDC to 48VDC, 0-10% Duty Cycle, Recommended at 36VDC | | |
| Pulse Current, (Max. 10 msec) (constant current power supply) | (mA) | 1440 | | |
| Max. Trigger Pulse Duration | (msec) | 10 | | |
| Duty Cycle | | 0-10% | | |
| | | | | |
| Additional Information | | | | |
| Additional Cooling Method | | Attached to machine part for better heat dissipation | | |
| Intensity Controller Selection | | SD and SDA-Series | | |
| CE Conformity | | YES | | |
| RoHS Compliance | | YES | | |
| | | | | |
| Connection | | | | |
| Connector Type (default) | | M12 5 PIN CONNECTOR (MALE) | | |
| Cable Length (out from lighting) | (mm) | 700 | | |
| Pin Configuration | | Pin | Signal | Cable Colour |
| | | 1 | 24V | BROWN |
| | | 2 | - | WHITE |
| | | 3 | GND | BLUE |
| | | 4 | - | BLACK |
| | | 5 | - | GRAY |
| | | | | |
| | | | | |
| Extension Cable | | | | |
| Connector Type (default) | | M12 5 PIN CONNECTOR (FEMALE) | | |
| Part Number | | EXT-FL-M12F-3M-24V | | |
| Cable Length (out from female connector) | (mm) | 3000 | | |
| Extension Cable (connect to M12 5 Pin Male Connector from lighting) | | | | |
| | | | | |
| Application | | | | |
| Illumination Type | | Direct Illumination | | |
| Application Use | | substrate inspection, label inspection, flat surface, fiducially recognition. | | |

IPE-130X180-HLW-00-2-G-XXX-XXXX-X

Uniform Graph (Relative Irradiation Strength) - Representative pattern

Lens focal length, $f = \text{infinity}$
 CWD = 310mm
 LWD = 130mm, 150mm, 170mm
 Lighting angle: 0°

| Tolerance % | L X W |
|-------------|----------|
| 10% | 77 X 84 |
| 20% | 103 X 91 |
| 30% | 110 X 91 |
| 40% | 114 X 91 |



* 1 cell = 2mm x 2mm