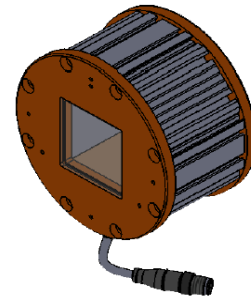
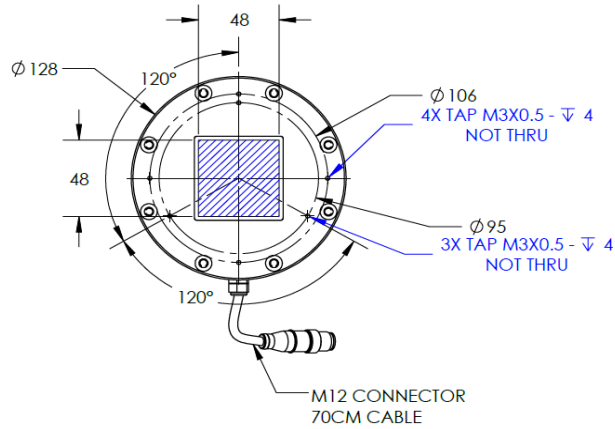
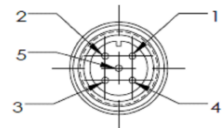


HCASP-00-040-W-24V

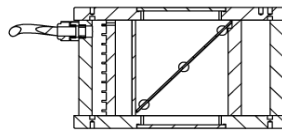
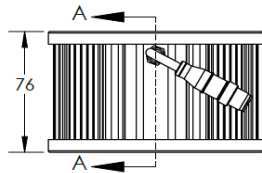
Lighting Dimension



MALE



PIN 1	BROWN	24V
PIN 2	WHITE	-
PIN 3	BLUE	GND
PIN 4	BLACK	-
PIN 5	GRAY	-



SECTION A-A
SCALE 1 : 3



Mechanical Information	
Casing Material	Aluminium
Storage & Operating Temperature Range	Temp 0-°C, Humidity 20-85%
Weight	1103 g
Length / Outer Diameter	128 mm
Width / Inner Diameter	48 mm
Thickness / Height	76 mm



HCASP-00-040-W-24V

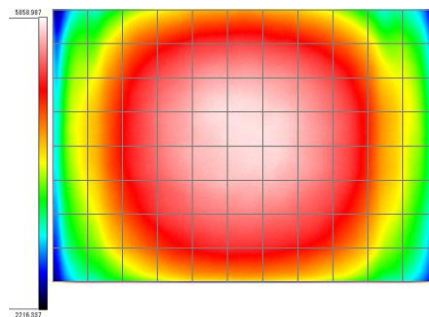
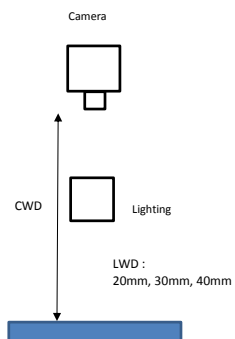
Optical Information																															
Part Number		HCASP-00-040-W-24V																													
LED Colour		WHITE																													
Wavelength	(nm)	* Refer to the Chromaticity Table Below																													
Intensity (±15%)	(Lux)	53500					40100		20300																						
Working Distance	(mm)	20					30		50																						
Illumination (number of rows)		X																													
Illumination Active Area																															
Active Length	(mm)	48																													
Active Width	(mm)	48																													
Emission Angle	(deg.)	0																													
Eye Safety Class (IEC62471)		EXEMPT																													
*CHROMATICITY TABLE		<table><tr><td>X</td><td>0.296</td><td>0.287</td><td>0.307</td><td>0.311</td></tr><tr><td>Y</td><td>0.276</td><td>0.295</td><td>0.315</td><td>0.294</td></tr></table>					X	0.296	0.287	0.307	0.311	Y	0.276	0.295	0.315	0.294	<table><tr><td>X</td><td>0.311</td><td>0.307</td><td>0.33</td><td>0.33</td></tr><tr><td>Y</td><td>0.294</td><td>0.315</td><td>0.339</td><td>0.318</td></tr></table>					X	0.311	0.307	0.33	0.33	Y	0.294	0.315	0.339	0.318
X	0.296	0.287	0.307	0.311																											
Y	0.276	0.295	0.315	0.294																											
X	0.311	0.307	0.33	0.33																											
Y	0.294	0.315	0.339	0.318																											
Electrical Information																															
Lighting Supply Voltage (constant voltage mode)		24V ± 2%																													
Continuous Current	(mA)	570																													
Power Consumption	(W)	13.68																													
Lighting Casing Temperature, Operating after 60 minutes	°C	60.7																													
Strobe Mode Specification																															
Pulse Operation		YES																													
Max. Lighting Supply Voltage (constant voltage power supply)	(V)	Pulsing at 24VDC to 48VDC, 0-10% Duty Cycle, Recommended at 36VDC																													
Pulse Current, (Max. 10 msec) (constant current power supply)	(mA)	1710																													
Max. Trigger Pulse Duration	(msec)	10																													
Duty Cycle		0-10%																													
Additional Information																															
Additional Cooling Method		Attached to machine part for better heat dissipation																													
Intensity Controller Selection		SD and SDA Series																													
CE Conformity		YES																													
RoHS Compliance		YES																													
Connection																															
Connector Type (default)		M12 5 PIN CONNECTOR (MALE)																													
Cable Length (out from lighting)	(mm)	700																													
Pin Configuration		Pin	Signal				Cable Colour																								
		1	24V				BROWN																								
		2	-				WHITE																								
		3	GND				BLUE																								
		4	-				BLACK																								
		5	-				GRAY																								
Extension Cable																															
Connector Type (default)		M12 5 PIN CONNECTOR (FEMALE)																													
Part Number		EXT-FL-M12F-3M-24V																													
Cable Length (out from female connector)	(mm)	3000																													
Extension Cable (connect to M12 5 Pin Male Connector from lighting)																															
Application																															
Illumination Type		Coaxial Illumination																													
Application Use		Surface inspection and alignment, wafer, metal surface, film, LCD and glass, pattern on PCB.																													

HCASP-00-040-W-24V

Uniform Graph (Relative Irradiation Strength) - Representative pattern

Lens focal length, $f = \text{infinity}$
 CWD = 130mm
 LWD = 20mm, 30mm, 40mm
 Lighting angle: 0°

Tolerance %	L X W
10%	26 X 25
20%	36 X 36
30%	44 X 40
40%	51 X 40



* 1 cell = 5mm x 5mm