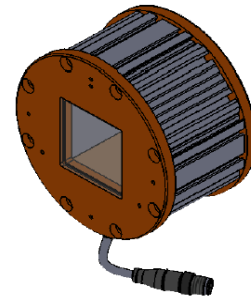
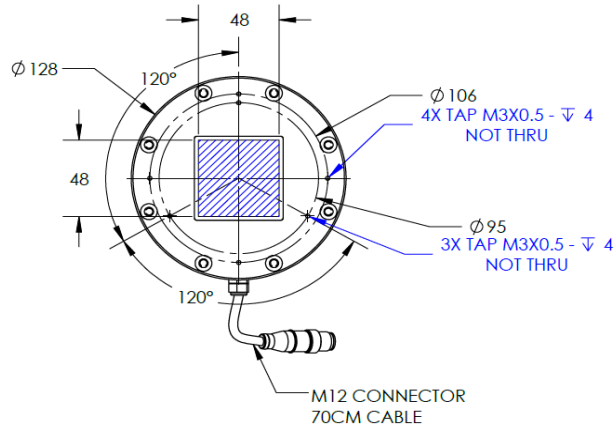
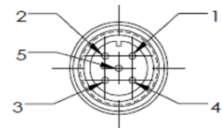


HCASP-00-040-B-24V

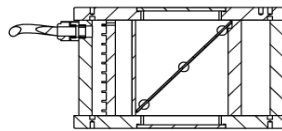
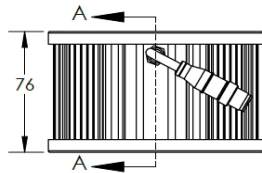
Lighting Dimension



MALE



| | | |
|-------|-------|-----|
| PIN 1 | BROWN | 24V |
| PIN 2 | WHITE | - |
| PIN 3 | BLUE | GND |
| PIN 4 | BLACK | - |
| PIN 5 | GRAY | - |



SECTION A-A
SCALE 1 : 3



| Mechanical Information | |
|---------------------------------------|----------------------------|
| Casing Material | Aluminium |
| Storage & Operating Temperature Range | Temp 0-°C, Humidity 20-85% |
| Weight | 1103 g |
| Length / Outer Diameter | 128 mm |
| Width / Inner Diameter | 48 mm |
| Thickness / Height | 76 mm |



HCASP-00-040-B-24V

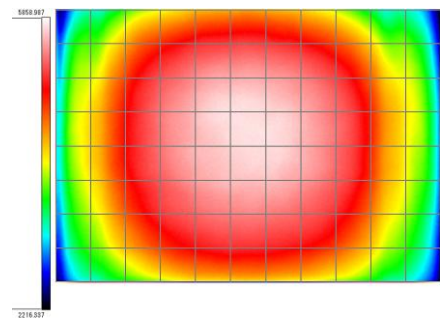
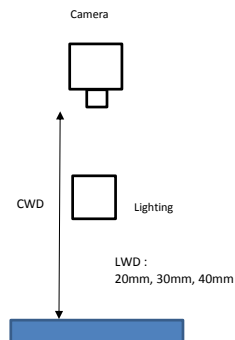
| Optical Information | | | | |
|--|--------|--|--------|--------------|
| Part Number | | HCASP-00-040-B-24V | | |
| LED Colour | | BLUE | | |
| Wavelength | (nm) | 450 | | |
| Intensity (±15%) | (Lux) | 53500 | 40100 | 20300 |
| Working Distance | (mm) | 20 | 30 | 50 |
| Illumination (number of rows) | | X | | |
| Illumination Active Area | | | | |
| Active Length | (mm) | 48 | | |
| Active Width | (mm) | 48 | | |
| Emission Angle | (deg.) | 0 | | |
| Eye Safety Class (IEC62471) | | II | | |
| | | | | |
| Electrical Information | | | | |
| Lighting Supply Voltage (constant voltage mode) | | 24V ± 2% | | |
| Continuous Current | (mA) | 570 | | |
| Power Consumption | (W) | 13.68 | | |
| Lighting Casing Temperature, Operating after 60 minutes | °C | 60.7 | | |
| | | | | |
| Strobe Mode Specification | | | | |
| Pulse Operation | | YES | | |
| Max. Lighting Supply Voltage (constant voltage power supply) | (V) | Pulsing at 24VDC to 48VDC, 0-10% Duty Cycle, Recommended at 36VDC | | |
| Pulse Current, (Max. 10 msec) (constant current power supply) | (mA) | 1710 | | |
| Max. Trigger Pulse Duration | (msec) | 10 | | |
| Duty Cycle | | 0-10% | | |
| | | | | |
| Additional Information | | | | |
| Additional Cooling Method | | Attached to machine part for better heat dissipation | | |
| Intensity Controller Selection | | SD and SDA Series | | |
| CE Conformity | | YES | | |
| RoHS Compliance | | YES | | |
| | | | | |
| Connection | | | | |
| Connector Type (default) | | M12 5 PIN CONNECTOR (MALE) | | |
| Cable Length (out from lighting) | (mm) | 700 | | |
| Pin Configuration | | Pin | Signal | Cable Colour |
| | | 1 | 24V | BROWN |
| | | 2 | - | WHITE |
| | | 3 | GND | BLUE |
| | | 4 | - | BLACK |
| | | 5 | - | GRAY |
| | | | | |
| | | | | |
| Extension Cable | | | | |
| Connector Type (default) | | M12 5 PIN CONNECTOR (FEMALE) | | |
| Part Number | | EXT-FL-M12F-3M-24V | | |
| Cable Length (out from female connector) | (mm) | 3000 | | |
| Extension Cable (connect to M12 5 Pin Male Connector from lighting) | | | | |
| | | | | |
| Application | | | | |
| Illumination Type | | Coaxial Illumination | | |
| Application Use | | Surface inspection and alignment, wafer, metal surface, film, LCD and glass, pattern on PCB. | | |

HCASP-00-040-B-24V

Uniform Graph (Relative Irradiation Strength) - Representative pattern

Lens focal length, $f = \text{infinity}$
 CWD = 130mm
 LWD = 20mm, 30mm, 40mm
 Lighting angle: 0°

| Tolerance % | L X W |
|-------------|---------|
| 10% | 26 X 25 |
| 20% | 36 X 36 |
| 30% | 44 X 40 |
| 40% | 51 X 40 |



* 1 cell = 5mm x 5mm