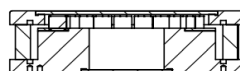
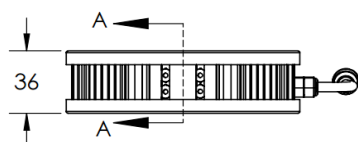
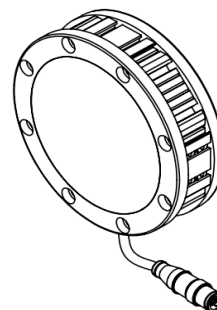
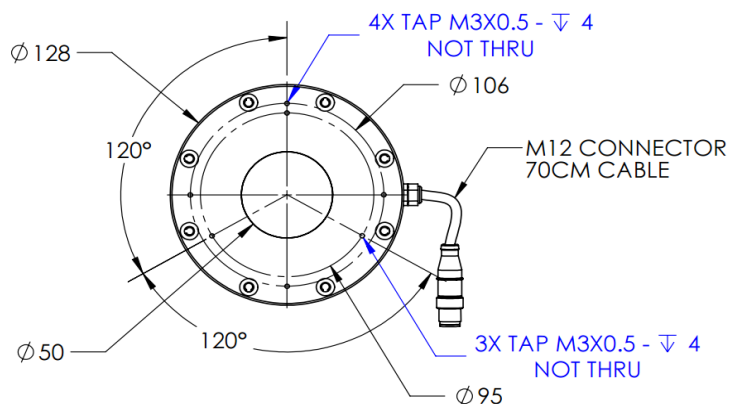


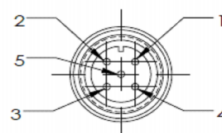
HLSWP-00-100-1-G-24V

Lighting Dimension



SECTION A-A
SCALE 1 : 3

MALE



PIN 1	BROWN	24V
PIN 2	WHITE	-
PIN 3	BLUE	GND
PIN 4	BLACK	-
PIN 5	GRAY	-



Mechanical Information	
Casing Material	Aluminium
Storage & Operating Temperature Range	Temp 0-°C, Humidity 20-85%
Weight	875 g
Length / Outer Diameter	128 mm
Width / Inner Diameter	50 mm
Thickness / Height	36 mm



HLSWP-00-100-1-G-24V

Optical Information				
Part Number		HLSWP-00-100-1-G-24V		
LED Colour		GREEN		
Wavelength	(nm)	540		
Intensity (±15%)	(Lux)	27100	26600	26100
Working Distance	(mm)	90	100	110
Illumination (number of rows)		1		
Illumination Active Area				
Active Length	(mm)	90		
Active Width	(mm)	63.9		
Emission Angle	(deg.)	0		
Eye Safety Class (IEC62471)		EXEMPT		
Electrical Information				
Lighting Supply Voltage (constant voltage mode)		24V ± 2%		
Continuous Current	(mA)	315		
Power Consumption	(W)	7.56		
Lighting Casing Temperature, Operating after 60 minutes	°C	52.5		
Strobe Mode Specification				
Pulse Operation		YES		
Max. Lighting Supply Voltage (constant voltage power supply)	(V)	Pulsing at 24VDC to 48VDC, 0-10% Duty Cycle, Recommended at 36VDC		
Pulse Current, (Max. 10 msec) (constant current power supply)	(mA)	945		
Max. Trigger Pulse Duration	(msec)	10		
Duty Cycle		0-10%		
Additional Information				
Additional Cooling Method		Attached to machine part for better heat dissipation		
Intensity Controller Selection		SD and SDA Series		
CE Conformity		YES		
RoHS Compliance		YES		
Connection				
Connector Type (default)		M12 5 PIN CONNECTOR (MALE)		
Cable Length (out from lighting)	(mm)	700		
Pin Configuration		Pin	Signal	Cable Colour
		1	24V	BROWN
		2	-	WHITE
		3	GND	BLUE
		4	-	BLACK
		5	-	GRAY
Extension Cable				
Connector Type (default)		M12 5 PIN CONNECTOR (FEMALE)		
Part Number		EXT-FL-M12F-3M-24V		
Cable Length (out from female connector)	(mm)	3000		
Extension Cable (connect to M12 5 Pin Male Connector from lighting)				
Application				
Illumination Type		Direct Illumination		
Application Use		substrate inspection, label inspection, flat surface, fiducially recognition.		

HLSWP-00-100-1-G-24V

Uniform Graph (Relative Irradiation Strength) - Representative pattern

Lens focal length, $f = \text{infinity}$
 CWD = 428mm
 LWD = 100mm, 120mm, 140mm
 Lighting angle: 0°

Tolerance %	L X W
10%	24 X 52
20%	40 X 53
30%	46 X 53
40%	50 X 53

