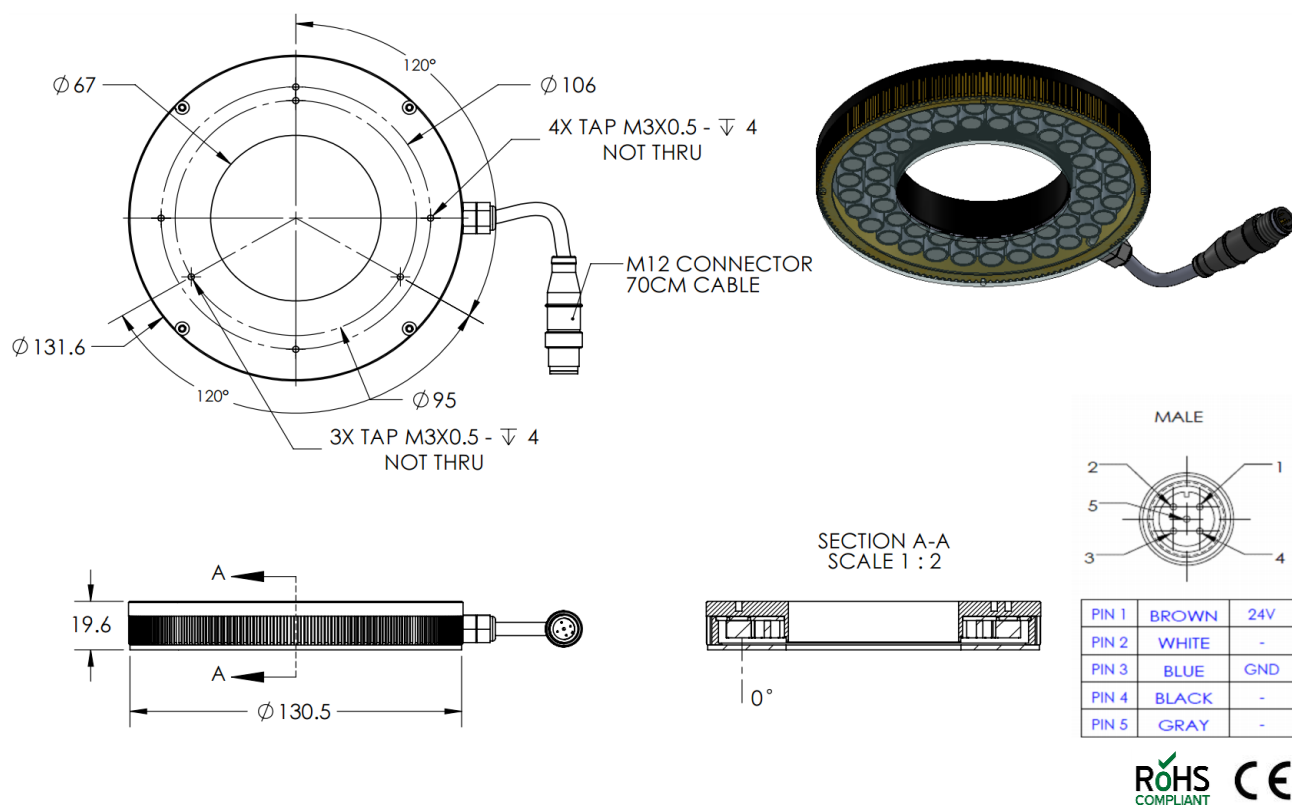


HLSW-00-130-2-W-24V

Lighting Dimension



Mechanical Information	
Casing Material	Aluminium
Storage & Operating Temperature Range	Temp 0-60°C, Humidity 20-85%
Weight	295 g
Length / Outer Diameter	131.6 mm
Width / Inner Diameter	67 mm
Thickness / Height	19.6 mm



HLSW-00-130-2-W-24V

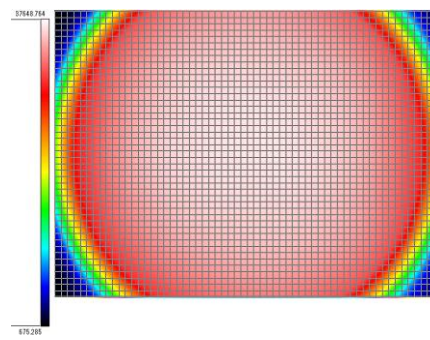
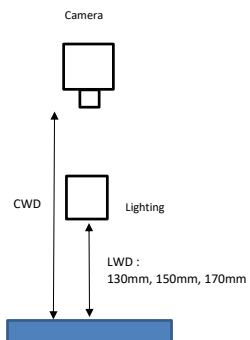
Optical Information																									
Part Number		HLSW-00-130-2-W-24V																							
LED Colour		WHITE																							
Wavelength	(nm)	* Refer to the Chromaticity Table Below																							
Intensity (±15%)	(Lux)	43000	42600		40400																				
Working Distance	(mm)	112	127		143																				
Illumination (number of rows)		2																							
Illumination Active Area																									
Active Length	(mm)	119.5																							
Active Width	(mm)	68.6																							
Emission Angle	(deg.)	0																							
Eye Safety Class (IEC62471)		EXEMPT																							
*CHROMATICITY TABLE		<table><tr><td>X</td><td>0.296</td><td>0.287</td><td>0.307</td><td>0.311</td></tr><tr><td>Y</td><td>0.276</td><td>0.295</td><td>0.315</td><td>0.294</td></tr></table>		X	0.296	0.287	0.307	0.311	Y	0.276	0.295	0.315	0.294	<table><tr><td>X</td><td>0.311</td><td>0.307</td><td>0.33</td><td>0.33</td></tr><tr><td>Y</td><td>0.294</td><td>0.315</td><td>0.339</td><td>0.318</td></tr></table>		X	0.311	0.307	0.33	0.33	Y	0.294	0.315	0.339	0.318
X	0.296	0.287	0.307	0.311																					
Y	0.276	0.295	0.315	0.294																					
X	0.311	0.307	0.33	0.33																					
Y	0.294	0.315	0.339	0.318																					
Electrical Information																									
Lighting Supply Voltage (constant voltage mode)		24V ± 2%																							
Continuous Current	(mA)	620																							
Power Consumption	(W)	14.88																							
Lighting Casing Temperature, Operating after 60 minutes	°C	66.7																							
Strobe Mode Specification																									
Pulse Operation		YES																							
Max. Lighting Supply Voltage (constant voltage power supply)	(V)	Pulsing at 24VDC to 48VDC, 0-10% Duty Cycle Recommended at 36VDC																							
Pulse Current, (Max. 10 msec) (constant current power supply)	(mA)	1860																							
Max. Trigger Pulse Duration	(msec)	10																							
Duty Cycle		0-10%																							
Additional Information																									
Additional Cooling Method		Attached to machine part for better heat dissipation																							
Intensity Controller Selection		SD/SDA-Series																							
CE Conformity		YES																							
RoHS Compliance		YES																							
Connection																									
Connector Type (default)		M12 5 PIN CONNECTOR (MALE)																							
Cable Length (out from lighting)	(mm)	700																							
Pin Configuration		Pin	Signal		Cable Colour																				
		1	24V		BROWN																				
		2	-		WHITE																				
		3	GND		BLUE																				
		4	-		BLACK																				
		5	-		GRAY																				
Extension Cable																									
Connector Type (default)		M12 5 PIN CONNECTOR (FEMALE)																							
Part Number		EXT-FL-M12F-3M-24V																							
Cable Length (out from female connector)	(mm)	3000																							
Extension Cable (connect to M12 5 Pin Male Connector from lighting)																									
Application																									
Illumination Type		Direct Illumination																							
Application Use		substrate inspection, label inspection, flat surface, fiducially recognition.																							

HLSW-00-130-2-W-24V

Uniform Graph (Relative Irradiation Strength) - Representative pattern

Lens focal length, $f = \text{infinity}$
 CWD = 310mm
 LWD = 130mm, 150mm, 170mm
 Lighting angle: 0°

Tolerance %	L X W
10%	77 X 84
20%	103 X 91
30%	110 X 91
40%	114 X 91



* 1 cell = 2mm x 2mm