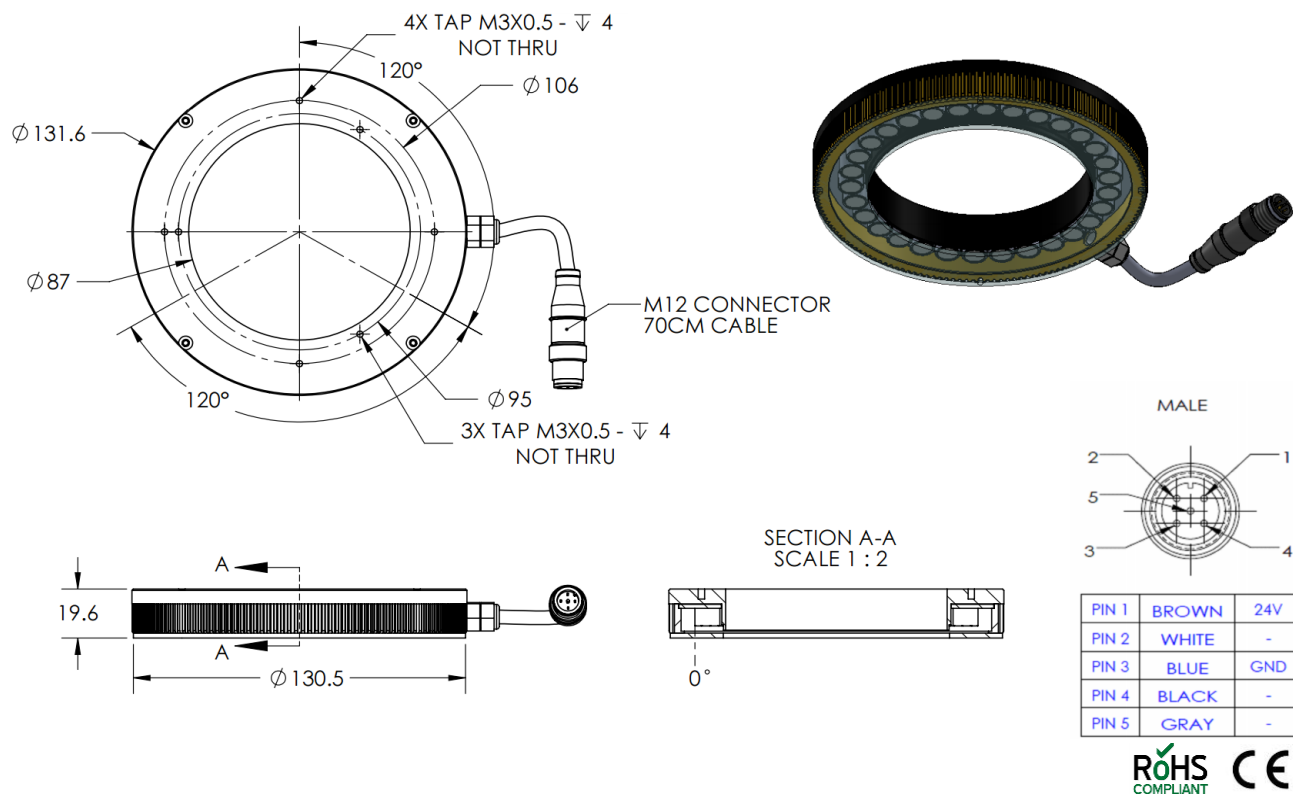


HLSW-00-130-1-W-24V

Lighting Dimension



Mechanical Information	
Casing Material	Aluminium
Storage & Operating Temperature Range	Temp 0-60°C, Humidity 20-85%
Weight	240 g
Length / Outer Diameter	131.6 mm
Width / Inner Diameter	87 mm
Thickness / Height	19.6 mm



HLSW-00-130-1-W-24V

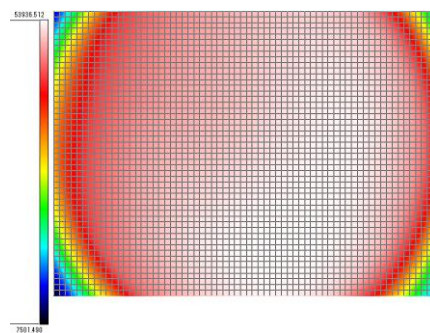
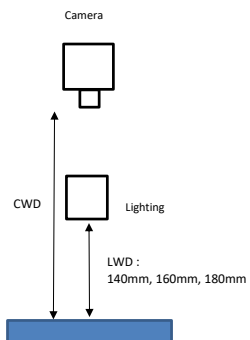
Optical Information																										
Part Number		HLSW-00-130-1-W-24V																								
LED Colour		WHITE																								
Wavelength	(nm)	* Refer to the Chromaticity Table Below																								
Intensity (±15%)	(Lux)	20800		20900		20400																				
Working Distance	(mm)	126		136		146																				
Illumination (number of rows)		1																								
Illumination Active Area																										
Active Length	(mm)	119.5																								
Active Width	(mm)	88.6																								
Emission Angle	(deg.)	0																								
Eye Safety Class (IEC62471)		EXEMPT																								
*CHROMATICITY TABLE		<table><tr><td>X</td><td>0.296</td><td>0.287</td><td>0.307</td><td>0.311</td></tr><tr><td>Y</td><td>0.276</td><td>0.295</td><td>0.315</td><td>0.294</td></tr></table>		X	0.296	0.287	0.307	0.311	Y	0.276	0.295	0.315	0.294	<table><tr><td>X</td><td>0.311</td><td>0.307</td><td>0.33</td><td>0.33</td></tr><tr><td>Y</td><td>0.294</td><td>0.315</td><td>0.339</td><td>0.318</td></tr></table>			X	0.311	0.307	0.33	0.33	Y	0.294	0.315	0.339	0.318
X	0.296	0.287	0.307	0.311																						
Y	0.276	0.295	0.315	0.294																						
X	0.311	0.307	0.33	0.33																						
Y	0.294	0.315	0.339	0.318																						
Electrical Information																										
Lighting Supply Voltage (constant voltage mode)		24V ± 2%																								
Continuous Current	(mA)	450																								
Power Consumption	(W)	10.8																								
Lighting Casing Temperature, Operating after 60 minutes	°C	68.5																								
Strobe Mode Specification																										
Pulse Operation		YES																								
Max. Lighting Supply Voltage (constant voltage power supply)	(V)	Pulsing at 24VDC to 48VDC, 0-10% Duty Cycle Recommended at 36VDC																								
Pulse Current, (Max. 10 msec) (constant current power supply)	(mA)	1350																								
Max. Trigger Pulse Duration	(msec)	10																								
Duty Cycle		0-10%																								
Additional Information																										
Additional Cooling Method		Attached to machine part for better heat dissipation																								
Intensity Controller Selection		SD/SDA-Series																								
CE Conformity		YES																								
RoHS Compliance		YES																								
Connection																										
Connector Type (default)		M12 5 PIN CONNECTOR (MALE)																								
Cable Length (out from lighting)	(mm)	700																								
Pin Configuration		Pin		Signal		Cable Colour																				
		1		24V		BROWN																				
		2		-		WHITE																				
		3		GND		BLUE																				
		4		-		BLACK																				
		5		-		GRAY																				
Extension Cable																										
Connector Type (default)		M12 5 PIN CONNECTOR (FEMALE)																								
Part Number		EXT-FL-M12F-3M-24V																								
Cable Length (out from female connector)	(mm)	3000																								
Extension Cable (connect to M12 5 Pin Male Connector from lighting)																										
Application																										
Illumination Type		Direct Illumination																								
Application Use		substrate inspection, label inspection, flat surface, fiducially recognition.																								

HLSW-00-130-1-W-24V

Uniform Graph (Relative Irradiation Strength) - Representative pattern

Lens focal length, $f = \infty$
 CWD = 340mm
 LWD = 140mm, 160mm, 180mm
 Lighting angle: 0°

Tolerance %	L X W
10%	77 X 100
20%	106 X 100
30%	117 X 100
40%	124 X 100



* 1 cell = 2mm x 2mm