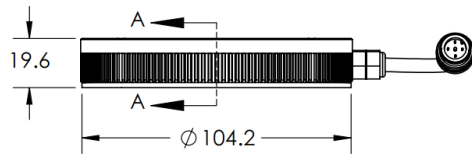
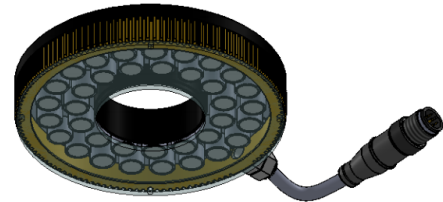
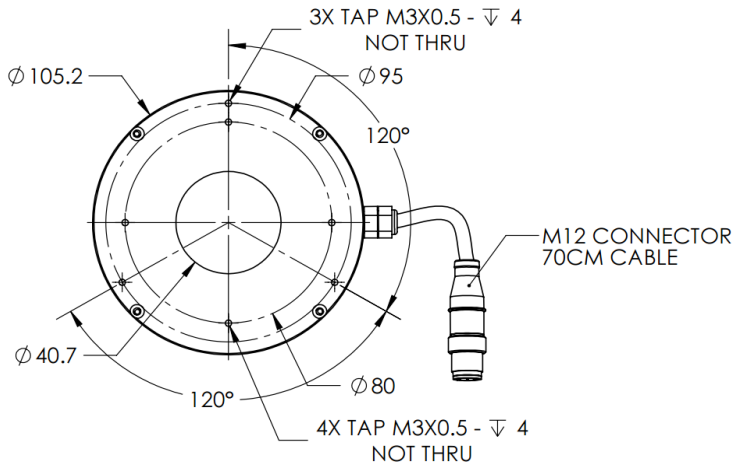
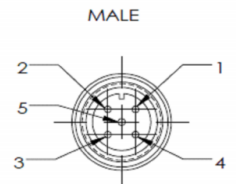
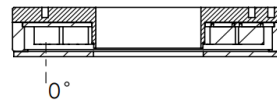


HLSW-00-100-2-W-24V

Lighting Dimension



SECTION A-A
SCALE 1 : 2



PIN	COLOR	VOLTAGE
PIN 1	BROWN	24V
PIN 2	WHITE	-
PIN 3	BLUE	GND
PIN 4	BLACK	-
PIN 5	GRAY	-



Mechanical Information	
Casing Material	Aluminium
Storage & Operating Temperature Range	Temp 0-60°C, Humidity 20-85%
Weight	260 g
Length / Outer Diameter	105.2 mm
Width / Inner Diameter	40.7 mm
Thickness / Height	19.6 mm



HLSW-00-100-2-W-24V

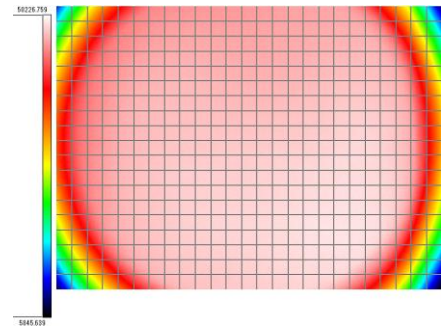
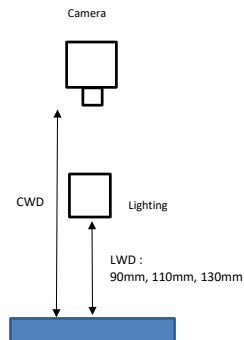
Optical Information																															
Part Number		HLSW-00-100-2-W-24V																													
LED Colour		WHITE																													
Wavelength	(nm)	* Refer to the Chromaticity Table Below																													
Intensity (±15%)	(Lux)	61800				59300				55800																					
Working Distance	(mm)	76				91				107																					
Illumination (number of rows)		2																													
Illumination Active Area																															
Active Length	(mm)	93.2																													
Active Width	(mm)	42.3																													
Emission Angle	(deg.)	0																													
Eye Safety Class (IEC62471)		EXEMPT																													
*CHROMATICITY TABLE		<table><tr><td>X</td><td>0.296</td><td>0.287</td><td>0.307</td><td>0.311</td></tr><tr><td>Y</td><td>0.276</td><td>0.295</td><td>0.315</td><td>0.294</td></tr></table>					X	0.296	0.287	0.307	0.311	Y	0.276	0.295	0.315	0.294	<table><tr><td>X</td><td>0.311</td><td>0.307</td><td>0.33</td><td>0.33</td></tr><tr><td>Y</td><td>0.294</td><td>0.315</td><td>0.339</td><td>0.318</td></tr></table>					X	0.311	0.307	0.33	0.33	Y	0.294	0.315	0.339	0.318
X	0.296	0.287	0.307	0.311																											
Y	0.276	0.295	0.315	0.294																											
X	0.311	0.307	0.33	0.33																											
Y	0.294	0.315	0.339	0.318																											
Electrical Information																															
Lighting Supply Voltage (constant voltage mode)		24V ± 2%																													
Continuous Current	(mA)	480																													
Power Consumption	(W)	11.52																													
Lighting Casing Temperature, Operating after 60 minutes	°C	52																													
Strobe Mode Specification																															
Pulse Operation		YES																													
Max. Lighting Supply Voltage (constant voltage power supply)	(V)	Pulsing at 24VDC to 48VDC, 0-10% Duty Cycle Recommended at 36VDC																													
Pulse Current, (Max. 10 msec) (constant current power supply)	(mA)	1440																													
Max. Trigger Pulse Duration	(msec)	10																													
Duty Cycle		0-10%																													
Additional Information																															
Additional Cooling Method		Attached to machine part for better heat dissipation																													
Intensity Controller Selection		SD/SDA-Series																													
CE Conformity		YES																													
RoHS Compliance		YES																													
Connection																															
Connector Type (default)		M12 5 PIN CONNECTOR (MALE)																													
Cable Length (out from lighting)	(mm)	700																													
Pin Configuration		Pin	Signal				Cable Colour																								
		1	24V				BROWN																								
		2	-				WHITE																								
		3	GND				BLUE																								
		4	-				BLACK																								
		5	-				GRAY																								
Extension Cable																															
Connector Type (default)		M12 5 PIN CONNECTOR (FEMALE)																													
Part Number		EXT-FL-M12F-3M-24V																													
Cable Length (out from female connector)	(mm)	3000																													
Extension Cable (connect to M12 5 Pin Male Connector from lighting)																															
Application																															
Illumination Type		Direct Illumination																													
Application Use		substrate inspection, label inspection, flat surface, fiducially recognition.																													

HLSW-00-100-2-W-24V

Uniform Graph (Relative Irradiation Strength) - Representative pattern

Lens focal length, $f = \infty$
 CWD = 230mm
 LWD = 90mm, 110mm, 130mm
 Lighting angle: 0°

Tolerance %	L X W
10%	37 X 37
20%	41 X 38
30%	43 X 38
40%	46 X 38



* 1 cell = 2mm x 2mm