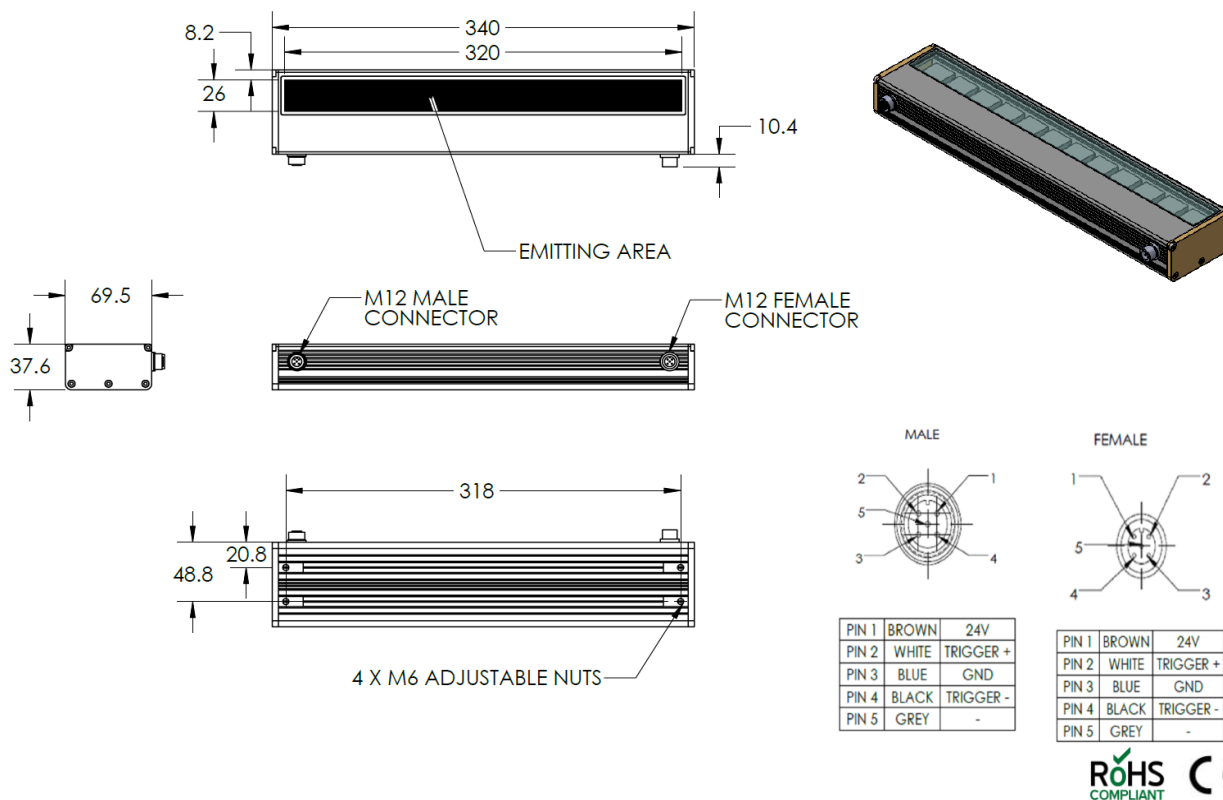


HBLP-00-320-1-W-24V



Lighting Dimension



Mechanical Information	
Casing Material	Aluminium
Storage & Operating Temperature Range	Temp 0-45°C, Humidity 20-85%
Weight	1050 g
Length / Outer Diameter	340 mm
Width / Inner Diameter	69.5 mm
Thickness / Height	37.6 mm



HBLP-00-320-1-W-24V

Optical Information																															
Part Number		HBLP-00-320-1-W-24V																													
LED Colour		WHITE																													
Wavelength	(nm)	* Refer to the Chromaticity Table Below																													
Intensity (±15%)	(Lux)	4872					3612																								
Working Distance	(mm)	400					500																								
Illumination (number of rows)		1																													
Illumination Active Area																															
Active Length	(mm)	320																													
Active Width	(mm)	26																													
Emission Angle	(deg.)	0																													
Eye Safety Class (IEC62471)		EXEMPT																													
*CHROMATICITY TABLE		<table><tr><td>X</td><td>0.296</td><td>0.287</td><td>0.307</td><td>0.311</td></tr><tr><td>Y</td><td>0.276</td><td>0.295</td><td>0.315</td><td>0.294</td></tr></table>					X	0.296	0.287	0.307	0.311	Y	0.276	0.295	0.315	0.294	<table><tr><td>X</td><td>0.311</td><td>0.307</td><td>0.33</td><td>0.33</td></tr><tr><td>Y</td><td>0.294</td><td>0.315</td><td>0.339</td><td>0.318</td></tr></table>					X	0.311	0.307	0.33	0.33	Y	0.294	0.315	0.339	0.318
X	0.296	0.287	0.307	0.311																											
Y	0.276	0.295	0.315	0.294																											
X	0.311	0.307	0.33	0.33																											
Y	0.294	0.315	0.339	0.318																											
Electrical Information																															
Lighting Supply Voltage (constant voltage mode)		24V ± 2%																													
Continuous Current	(mA)	320																													
Power Consumption	(W)	7.68																													
Lighting Casing Temperature, Operating after 60 minutes	°C	47.1																													
Strobe Mode Specification																															
Pulse Operation		YES																													
Max. Lighting Supply Voltage (constant voltage power supply)	(V)	Pulsing at 24VDC to 48VDC, 0-10% Duty Cycle Recommended at 36VDC																													
Pulse Current, (Max. 10 msec) (constant current power supply)	(mA)	960																													
Max. Trigger Pulse Duration	(msec)	10																													
Duty Cycle		0-10%																													
Additional Information																															
Additional Cooling Method		Attached to machine part for better heat dissipation																													
Intensity Controller Selection		ST & SDA Series																													
CE Conformity		YES																													
RoHS Compliance		YES																													
Connection																															
Connector Type (default)		M12 5 PIN MALE CONNECTOR					M12 5 PIN FEMALE CONNECTOR																								
Cable Length (out from lighting)	(mm)	-					-																								
Pin Configuration		Pin	Colour	Signal		Pin	Colour	Signal																							
		1	Brown	24V		1	Brown	24V																							
		2	White	-		2	White	-																							
		3	Blue	GND		3	Blue	GND																							
		4	Black	-		4	Black	-																							
		5	Gray	-		5	Gray	-																							
																															
Extension Cable																															
Connector Type (default)		M12 5 PIN CONNECTOR (FEMALE)																													
Part Number		EXT-FL-M12F-3M-24V																													
Cable Length (out from female connector)	(mm)	3000																													
Extension Cable (connect to M12 5 Pin Male Connector from lighting)																															
Application																															
Illumination Type		Direct Illumination																													
Application Use		General illumination, label inspection, character inspection, code recognition.																													

HBLP-00-320-1-W-24V

Uniform Graph (Relative Irradiation Strength) - Representative pattern

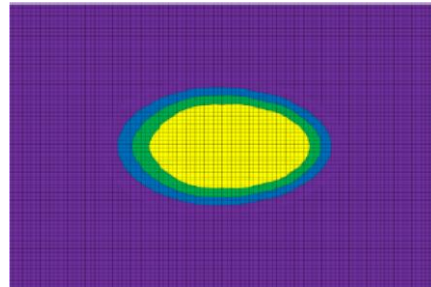
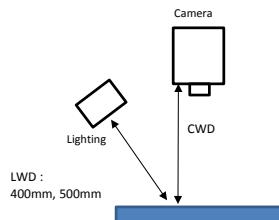
Lens focal length, $f = 6\text{mm}$

CWD = 400mm

LWD = 400mm, 500mm

Lighting angle: 60°

Tolerance %	L X W
10%	180 x 110
20%	215 x 130
30%	240 x 150
40%	480 x 360



* 1 cell = 5mm x 5mm