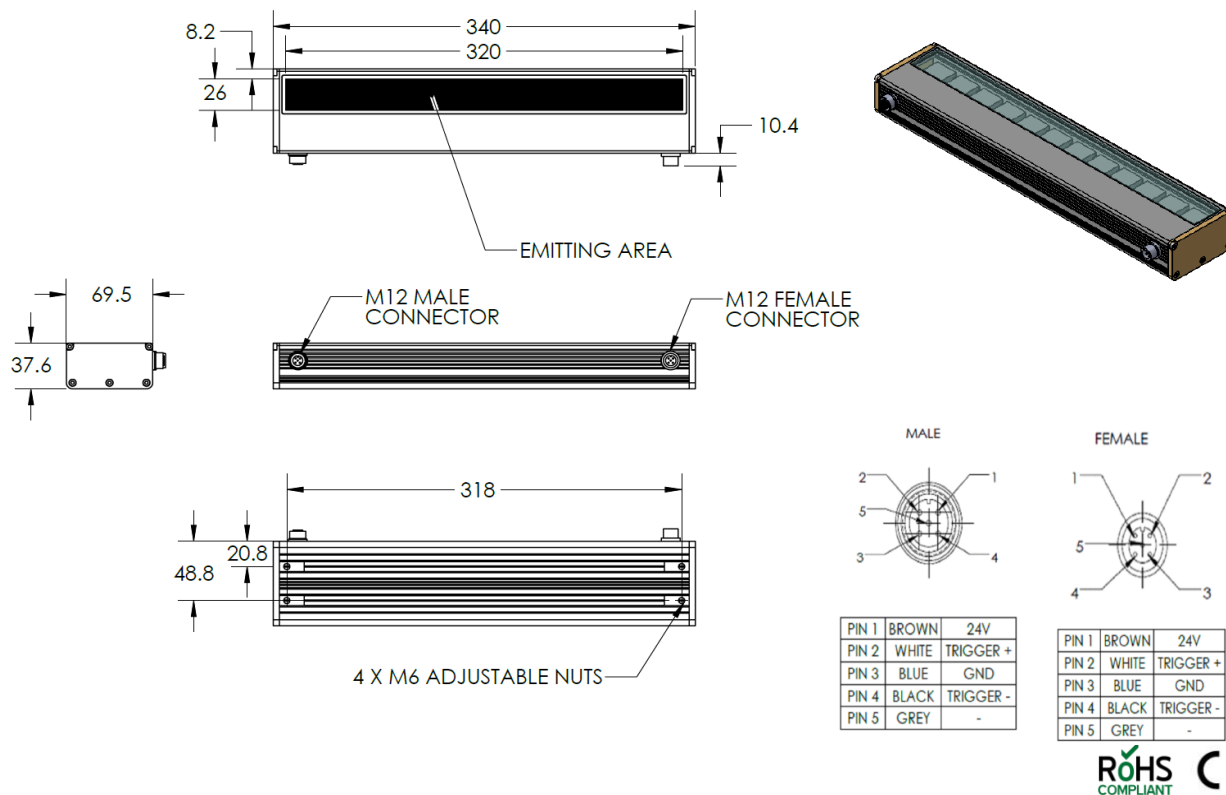


HBLP-00-320-1-G-24V



Lighting Dimension



Mechanical Information	
Casing Material	Aluminium
Storage & Operating Temperature Range	Temp 0-45°C, Humidity 20-85%
Weight	1050 g
Length / Outer Diameter	340 mm
Width / Inner Diameter	69.5 mm
Thickness / Height	37.6 mm



HBLP-00-320-1-G-24V

Optical Information							
Part Number		HBLP-00-320-1-G-24V					
LED Colour		GREEN					
Wavelength	(nm)	540					
Intensity (±15%)	(Lux)	3684			2736		
Working Distance	(mm)	400			500		
Illumination (number of rows)		1					
Illumination Active Area							
Active Length	(mm)	320					
Active Width	(mm)	26					
Emission Angle	(deg.)	0					
Eye Safety Class (IEC62471)		EXEMPT					
Electrical Information							
Lighting Supply Voltage (constant voltage mode)		24V ± 2%					
Continuous Current	(mA)	320					
Power Consumption	(W)	7.68					
Lighting Casing Temperature, Operating after 60 minutes	°C	44.8					
Strobe Mode Specification							
Pulse Operation		YES					
Max. Lighting Supply Voltage (constant voltage power supply)	(V)	Pulsing at 24VDC to 48VDC, 0-10% Duty Cycle Recommended at 36VDC					
Pulse Current, (Max. 10 msec) (constant current power supply)	(mA)	960					
Max. Trigger Pulse Duration	(msec)	10					
Duty Cycle		0-10%					
Additional Information							
Additional Cooling Method		Attached to machine part for better heat dissipation					
Intensity Controller Selection		ST & SDA Series					
CE Conformity		YES					
RoHS Compliance		YES					
Connection							
Connector Type (default)		M12 5 PIN MALE CONNECTOR				M12 5 PIN FEMALE CONNECTOR	
Cable Length (out from lighting)	(mm)	-				-	
Pin Configuration		Pin	Colour	Signal	Pin	Colour	Signal
		1	Brown	24V	1	Brown	24V
		2	White	-	2	White	-
		3	Blue	GND	3	Blue	GND
		4	Black	-	4	Black	-
		5	Gray	-	5	Gray	-
							
Extension Cable							
Connector Type (default)		M12 5 PIN CONNECTOR (FEMALE)					
Part Number		EXT-FL-M12F-3M-24V					
Cable Length (out from female connector)	(mm)	3000					
Extension Cable (connect to M12 5 Pin Male Connector from lighting)							
Application							
Illumination Type		Direct Illumination					
Application Use		General illumination, label inspection, character inspection, code recognition.					

HBLP-00-320-1-G-24V

Uniform Graph (Relative Irradiation Strength) - Representative pattern

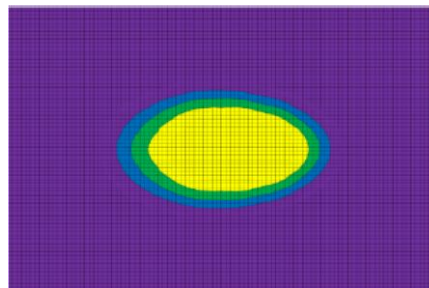
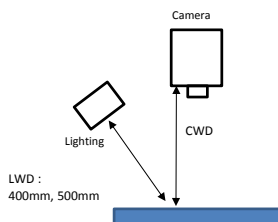
Lens focal length, $f = 6\text{mm}$

CWD = 400mm

LWD = 400mm, 500mm

Lighting angle: 60°

Tolerance %	L X W
10%	180 x 110
20%	215 x 130
30%	240 x 150
40%	480 x 360



* 1 cell = 5mm x 5mm