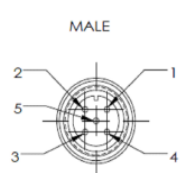
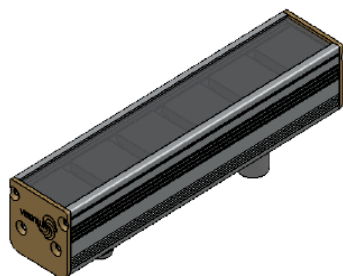
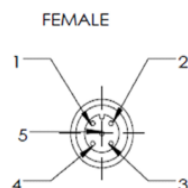


HBL3-00-160-1-G-24V

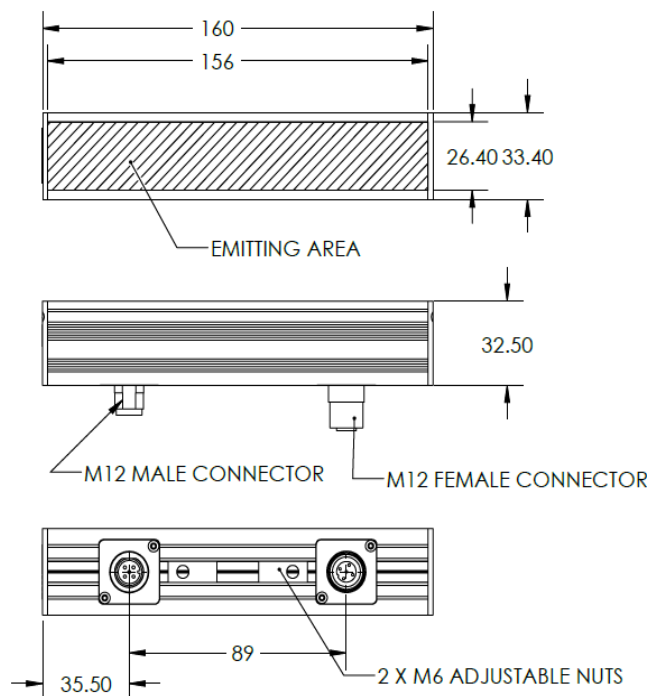
Lighting Dimension



PIN 1	BROWN	24V
PIN 2	WHITE	-
PIN 3	BLUE	GND
PIN 4	BLACK	-
PIN 5	GRAY	-



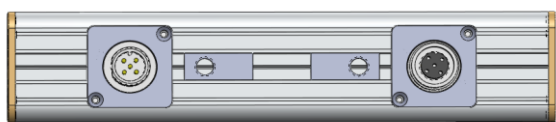

PIN 1	BROWN	24V
PIN 2	WHITE	-
PIN 3	BLUE	GND
PIN 4	BLACK	-
PIN 5	GRAY	-



Mechanical Information	
Casing Material	Aluminium
Storage & Operating Temperature Range	Temp 0-60°C, Humidity 20-85%
Weight	270 g
Length / Outer Diameter	160 mm
Width / Inner Diameter	33.4 mm
Thickness / Height	32.5 mm

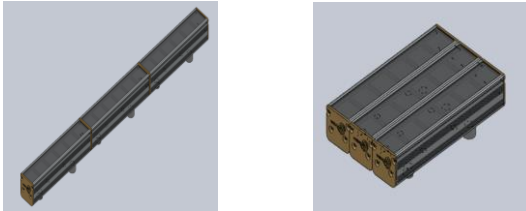
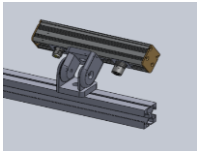
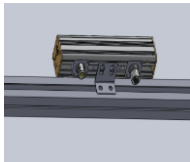


HBL3-00-160-1-G-24V

Optical Information							
Part Number		HBL3-00-160-1-G-24V					
LED Colour		GREEN					
Wavelength	(nm)	525					
Intensity (±15%)	(Lux)	3456			2149		
Working Distance	(mm)	300			400		
Illumination (number of rows)		1					
Illumination Active Area							
Active Length / Outer Diameter	(mm)	156					
Active Width / Inner Diameter	(mm)	26.4					
Emission Angle	(deg.)	0					
Eye Safety Class (IEC62471)		EXEMPT					
Electrical Information							
Lighting Supply Voltage (constant voltage mode)		24V ± 2%					
Continuous Current	(mA)	160					
Power Consumption	(W)	3.84					
Lighting Casing Temperature, Operating after 60 minutes	°C	55.7					
Strobe Mode Specification							
Pulse Operation		YES					
Max. Lighting Supply Voltage (constant voltage power supply)	(V)	Pulsing at 24VDC to 48VDC, 0-10% Duty Cycle Recommended at 36VDC					
Pulse Current, (Max. 10 msec) (constant current power supply)	(mA)	480					
Max. Trigger Pulse Duration	(msec)	10					
Duty Cycle		0-10%					
Additional Information							
Additional Cooling Method		Attached to machine part for better heat dissipation					
Intensity Controller Selection		SD/SDA-Series					
CE Conformity		YES					
RoHS Compliance		YES					
Connection							
Connector Type (default)		M12 5PIN MALE CONNECTOR			M12 5 PIN FEMALE CONNECTOR		
Cable Length (out from lighting)	(mm)	-			-		
Pin Configuration		Pin	Colour	Signal	Pin	Colour	Signal
		1	Brown	24V	1	Brown	24V
		2	White	-	2	White	-
		3	Blue	GND	3	Blue	GND
		4	Black	-	4	Black	-
		5	Gray	-	5	Gray	-
							
Extension Cable							
Connector Type (default)		M12 5 PIN CONNECTOR (FEMALE)					
Part Number		EXT-FL-M12F-3M-24V					
Cable Length (out from female connector)	(mm)	3000					
Extension Cable (connect to M12 5 Pin Male Connector from lighting)							
Application							
Illumination Type		High Luminosity Line Bar Light					
Application Use		Robotic picking, inspection for parts identification & missing parts, visual inspection for large workpiece, measuring stamp dimensions for press products					



HBL3-00-160-1-G-24V

Advantages	
Cascade Illuminator	
Easy Mounting	<div>Join Bracket (Angle Mount) </div> <div>L-shaped Plate (Horizontal Mount) </div>