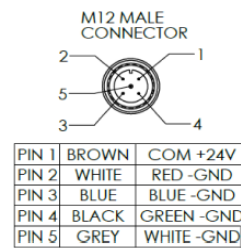
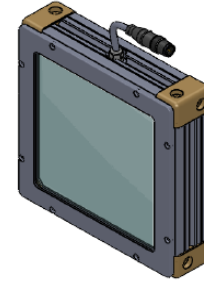
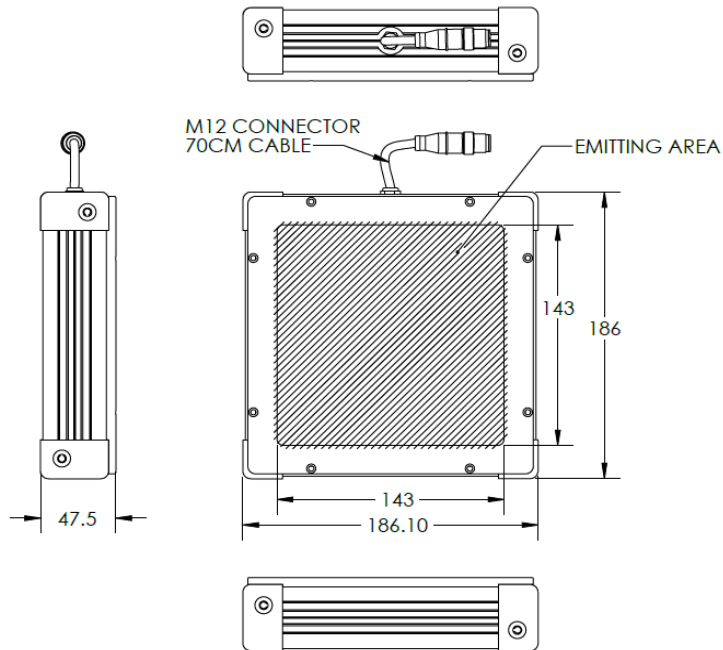


HBBC-00-160X160-X-RGBW-24V

Lighting Dimension



Mechanical Information	
Casing Material	Aluminium
Storage & Operating Temperature Range	Temp 0 - 45°C, Humidity 20-85%
Weight	TBA
Length / Outer Diameter	186 mm
Width / Inner Diameter	186.10 mm
Thickness / Height	47.5 mm



HBBC-00-160X160-X-RGBW-24V

Optical Information														
Part Number	HBBC-00-160X160-X-RGBW-24V													
LED Colour	RED			GREEN			BLUE			WHITE				
Wavelength	(nm)	630			525			470			*Refer to Chromaticity Table below			
Intensity (±15%)	(Lux)	TBA	TBA	TBA	TBA	TBA	TBA	TBA	TBA	TBA	TBA	TBA	TBA	
Working Distance	(mm)	200	220	250	200	220	250	200	220	250	200	220	250	
Illumination (number of rows)	2													
Illumination Active Area														
Active Length / Outer Diameter	(mm)	143												
Active Width / Inner Diameter	(mm)	143												
Emission Angle	(deg.)	00												
Eye Safety Class (IEC62471)	II													
Chromaticity Table:-	*CHROMATICITY TABLE													
	X	0.296	0.287	0.307	0.311		X	0.311	0.307	0.33	0.33			
	Y	0.276	0.295	0.315	0.294		Y	0.294	0.315	0.339	0.318			
Electrical Information														
Lighting Supply Voltage (constant voltage mode)		24V ± 2%												
Continuous Current	(mA)	644			700			560			644			
Power Consumption	(W)	15.46			16.8			13.44			15.46			
Lighting Casing Temperature, Operating after 60 minutes	°C	TBA												
Strobe Mode Specification														
Pulse Operation		YES												
Max. Lighting Supply Voltage (constant voltage power supply)	(V)	Pulsing at 24VDC to 48VDC, 0-10% Duty Cycle, Recommended at 36VDC												
Pulse Current, (Max. 10 msec) (constant current power supply)	(mA)	1932			2100			1680			1932			
Max. Trigger Pulse Duration	(msec)	10												
Duty Cycle		0-10%												
Additional Information														
Additional Cooling Method		Attached to machine part for better heat dissipation												
Intensity Controller Selection		ANGX, SD and ST Series												
CE Conformity		YES												
RoHS Compliance		YES												
Connection														
Connector Type (default)		M12 5 PIN CONNECTOR (MALE)												
Cable Length (out from lighting)	(mm)	700												
Pin Configuration		Pin		Signal		Cable Colour								
		1		COM+		BROWN, WHITE, RED, GREY								
		2		RED-		BLACK								
		3		GREEN-		YELLOW								
		4		BLUE-		BLUE								
		5		WHITE-		PURPLE								
Extension Cable														
Connector Type (default)		M12 5 PIN CONNECTOR (FEMALE)												
Part Number		EXT-FL-M12F-3M-24V												
Cable Length (out from female connector)	(mm)	3000												
Extension Cable (connect to M12 5 Pin Male Connector from lighting)														
Application														
Illumination Type		High Intensity Collimated Backlight												
Application Use		Substrate inspection, label inspection, flat surface, fiducially recognition.												