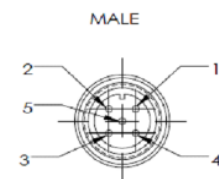
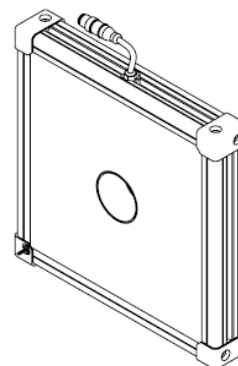
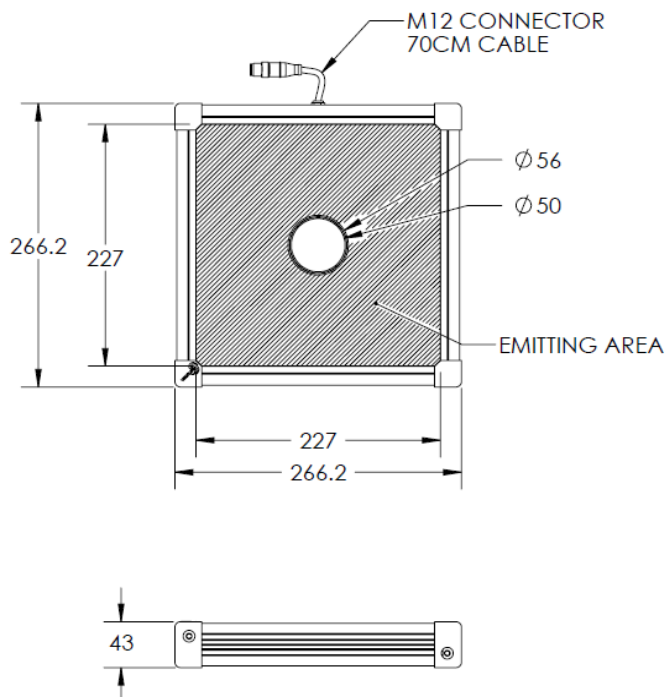


HBBQ-00-240X240-X-W-24V

Lighting Dimension



PIN 1	BROWN	24V
PIN 2	WHITE	-
PIN 3	BLUE	GND
PIN 4	BLACK	-
PIN 5	GRAY	-



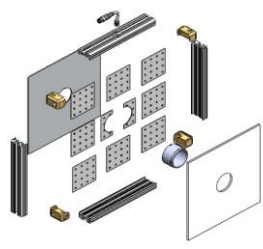
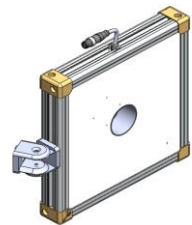


Mechanical Information	
Casing Material	Aluminium
Storage & Operating Temperature Range	Temp 0-60°C, Humidity 20-85%
Weight	1970 g
Length / Outer Diameter	266.2 X 266.2 mm
Width / Inner Diameter	50 mm
Thickness / Height	43 mm



HBBQ-00-240X240-X-W-24V

Optical Information											
Part Number		HBBQ-00-240X240-X-W-24V									
LED Colour		WHITE									
Wavelength	(nm)	*Refer to the Chromaticity Table below									
Intensity (±15%)	(Lux)	9360					7960			6020	
Working Distance	(mm)	200					220			250	
Illumination (number of rows)		X									
Illumination Active Area											
Active Length / Outer diameter	(mm)	227 X 227									
Active Width / Inner diameter	(mm)	56									
Emission Angle	(deg.)	0									
Eye Safety Class (IEC62471)		EXEMPT									
*CHROMATICITY TABLE		X	0.296	0.287	0.307	0.311	X	0.311	0.307	0.33	0.33
		Y	0.276	0.295	0.315	0.294	Y	0.294	0.315	0.339	0.318
Electrical Information											
Lighting Supply Voltage (constant voltage mode)		24V ± 2%									
Continuous Current	(mA)	1100									
Power Consumption	(W)	26.4									
Lighting Casing Temperature, Operating after 60 minutes	°C	59.5									
Strobe Mode Specification											
Pulse Operation		YES									
Max. Lighting Supply Voltage (constant voltage power supply)	(V)	Pulsing at 24VDC to 48VDC, 0-10% Duty Cycle Recommended at 36VDC									
Pulse Current, (Max. 10 msec) (constant current power supply)	(mA)	3300									
Max. Trigger Pulse Duration	(msec)	10									
Duty Cycle		0-10%									
Additional Information											
Additional Cooling Method		Attached to machine part for better heat dissipation									
Intensity Controller Selection		SD/SDA-Series									
CE Conformity		YES									
RoHS Compliance		YES									
Connection											
Connector Type (default)		M12 5 PIN CONNECTOR (MALE)									
Cable Length (out from lighting)	(mm)	700									
Pin Configuration		Pin	Signal				Cable Colour				
		1	24V				BROWN				
		2	-				WHITE				
		3	GND				BLUE				
		4	-				BLACK				
		5	-				GRAY				
Extension Cable											
Connector Type (default)		M12 5 PIN CONNECTOR (FEMALE)									
Part Number		EXT-FL-M12F-3M-24V									
Cable Length (out from female connector)	(mm)	3000									
Extension Cable (connect to M12 5 Pin Male Connector from lighting)											
Application											
Illumination Type		Diffused Illumination									
Application Use		Robotic picking, inspection for parts identification & missing parts, visual inspection for large workpiece, measuring stamp dimensions for press products									

HBBQ-00-240X240-X-W-24V

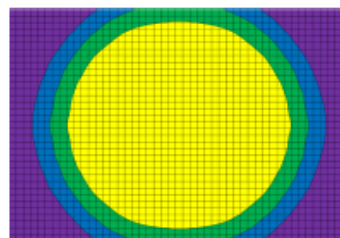
Advantages	
PCBA Cascade	
Easy Mounting	Join Bracket (Angle Mount) 
	L Bracket (Vertical Mount) 
	L-shaped Plate (Horizontal Mount) 

Uniform Graph (Relative Irradiation Strength) - Representative pattern

LENS FOCAL LENGTH, $F = 8 \text{ mm}$

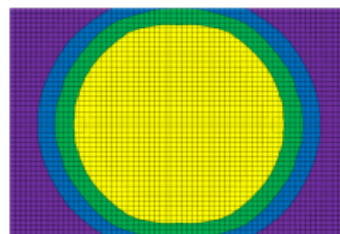
CWD = 300 mm
LWD = 300 mm

COLOUR	TOLERANCE	L X W
Yellow	$\pm 15 \%$	160 X 160
Green	$\pm 20 \%$	180 X 175
Blue	$\pm 25 \%$	205 X 175
Purple	$\pm 30 \%$	240 X 175



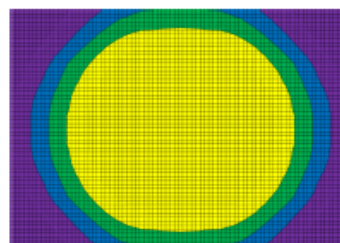
CWD = 400 mm
LWD = 400 mm

COLOUR	TOLERANCE	L X W
Yellow	$\pm 15 \%$	200 X 205
Green	$\pm 20 \%$	235 X 235
Blue	$\pm 25 \%$	270 X 235
Purple	$\pm 30 \%$	315 X 235



CWD = 500 mm
LWD = 500 mm

COLOUR	TOLERANCE	L X W
Yellow	$\pm 15 \%$	270 X 260
Green	$\pm 20 \%$	310 X 300
Blue	$\pm 25 \%$	350 X 300
Purple	$\pm 30 \%$	400 X 300



* Each individual box is 5 X 5 mm.

*Disclaimer : The graphs portrayed are for reference only and does not in any way guarantee the quality of this product.