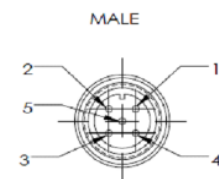
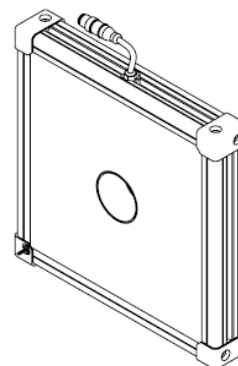
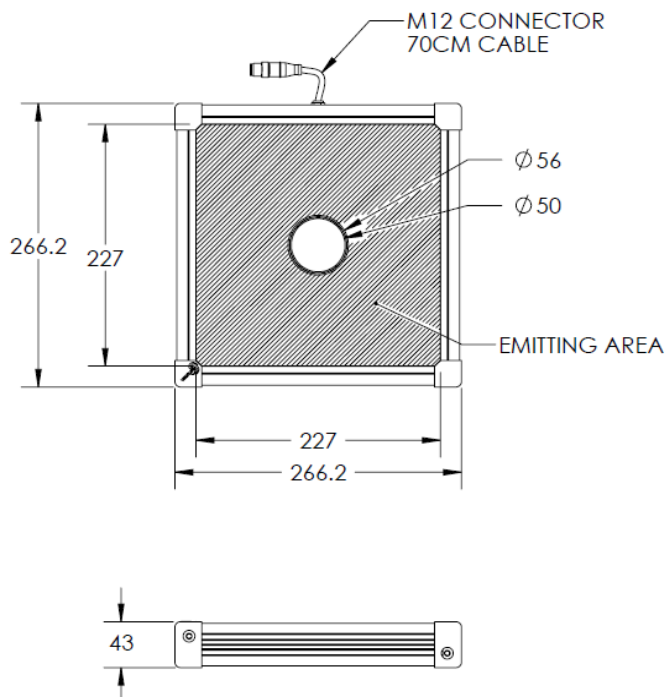


## HBBQ-00-240X240-X-B-24V

### Lighting Dimension





PIN 1	BROWN	24V
PIN 2	WHITE	-
PIN 3	BLUE	GND
PIN 4	BLACK	-
PIN 5	GRAY	-



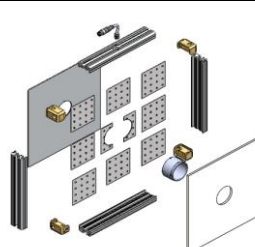
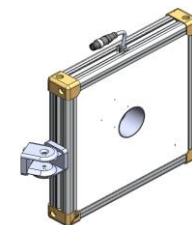
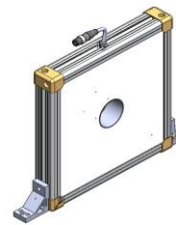
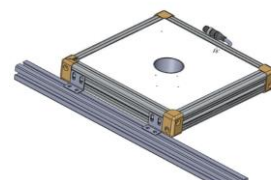
Mechanical Information	
Casing Material	Aluminium
Storage & Operating Temperature Range	Temp 0-60°C, Humidity 20-85%
Weight	1970 g
Length / Outer Diameter	266.2 X 266.2 mm
Width / Inner Diameter	50 mm
Thickness / Height	43 mm



## HBBQ-00-240X240-X-B-24V

Optical Information				
Part Number		HBBQ-00-240X240-X-B-24V		
LED Colour		BLUE		
Wavelength	(nm)	470		
Intensity ( ±15%)	(Lux)	3321	2824	2136
Working Distance	(mm)	200	220	250
Illumination (number of rows)		X		
Illumination Active Area				
Active Length / Outer diameter	(mm)	227 X 227		
Active Width / Inner diameter	(mm)	56		
Emission Angle	(deg.)	0		
Eye Safety Class ( IEC62471)		II		
Electrical Information				
Lighting Supply Voltage (constant voltage mode)		24V ± 2%		
Continuous Current	(mA)	1100		
Power Consumption	(W)	26.4		
Lighting Casing Temperature, Operating after 60 minutes	°C	59.5		
Strobe Mode Specification				
Pulse Operation		YES		
Max. Lighting Supply Voltage (constant voltage power supply)	(V)	Pulsing at 24VDC to 48VDC, 0-10% Duty Cycle Recommended at 36VDC		
Pulse Current, (Max. 10 msec) (constant current power supply)	(mA)	3300		
Max. Trigger Pulse Duration	(msec)	10		
Duty Cycle		0-10%		
Additional Information				
Additional Cooling Method		Attached to machine part for better heat dissipation		
Intensity Controller Selection		SD/SDA-Series		
CE Conformity		YES		
RoHS Compliance		YES		
Connection				
Connector Type (default)		M12 5 PIN CONNECTOR (MALE)		
Cable Length (out from lighting)	( mm )	700		
Pin Configuration		Pin	Signal	Cable Colour
		1	24V	BROWN
		2	-	WHITE
		3	GND	BLUE
		4	-	BLACK
		5	-	GRAY
				
Extension Cable				
Connector Type (default)		M12 5 PIN CONNECTOR (FEMALE)		
Part Number		EXT-FL-M12F-3M-24V		
Cable Length (out from female connector)	(mm)	3000		
Extension Cable (connect to M12 5 Pin Male Connector from lighting)				
Application				
Illumination Type		Backlight Illumination		
Application Use		Lead frame inspection, shape recognition, size measurement		

## HBBQ-00-240X240-X-B-24V

Advantages	
PCBA Cascade	
Easy Mounting	<div>Join Bracket (Angle Mount)</div>  <div>L Bracket (Vertical Mount)</div>  <div>L-shaped Plate (Horizontal Mount)</div> 

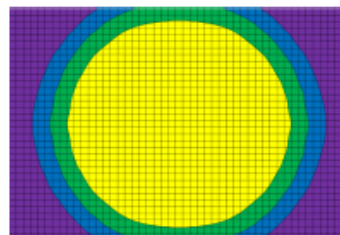
### Uniform Graph ( Relative Irradiation Strength) - Representative pattern

LENS FOCAL LENGTH, F = 8 mm

CWD = 300 mm

LWD = 300 mm

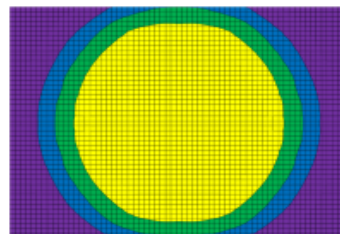
COLOUR	TOLERANCE	L X W
Yellow	± 15 %	160 X 160
Green	± 20 %	180 X 175
Blue	± 25 %	205 X 175
Purple	± 30 %	240 X 175



CWD = 400 mm

LWD = 400 mm

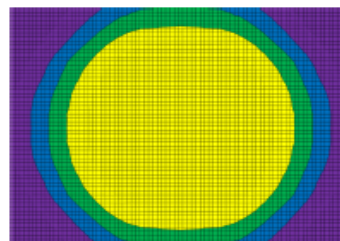
COLOUR	TOLERANCE	L X W
Yellow	± 15 %	200 X 205
Green	± 20 %	235 X 235
Blue	± 25 %	270 X 235
Purple	± 30 %	315 X 235



CWD = 500 mm

LWD = 500 mm

COLOUR	TOLERANCE	L X W
Yellow	± 15 %	270 X 260
Green	± 20 %	310 X 300
Blue	± 25 %	350 X 300
Purple	± 30 %	400 X 300



\* Each individual box is 5 X 5 mm.

\*Disclaimer : The graphs portrayed are for reference only and does not in any way guarantee the quality of this product.